



## Deep roots, global vision.

Founded in 1956, Comelit Group SpA is an industrial company operating on a worldwide scale and specialising in the design and manufacture of video entry, video surveillance, anti-intrusion, home automation and access control systems. The company has a strong international vocation thanks to its close ties with the area in which it was created and in which its headquarters are still located today.

## An international group.

Comelit exports to over 70 countries worldwide and, in addition to its Italian headquarters, has 15 branches located in strategic areas in which the company operates: from Europe to the Far East, the United States and the Middle East. This articulated sales structure integrates shared know-how with the awareness of specific requirements in each market.



 **Comelit**<sup>®</sup>  
Passion. Technology. Design.





## Constant innovation, friendly technology.

Comelit makes constantly looking to the future its mission. Innovation through continuous investment in manpower and technology finds an outlet in the design of new solutions dedicated to improving the quality of everyday life by maximising simplicity and functionality.



## Design: style, passion, art.

Besides placing technology at the service of mankind, Comelit is also a byword for design. Its unique and original style combines the most hi-tech materials with simple lines, clean shapes and cutting-edge colours. Every Comelit product therefore conveys a new concept for living in a space, in harmony with modern architectural trends.

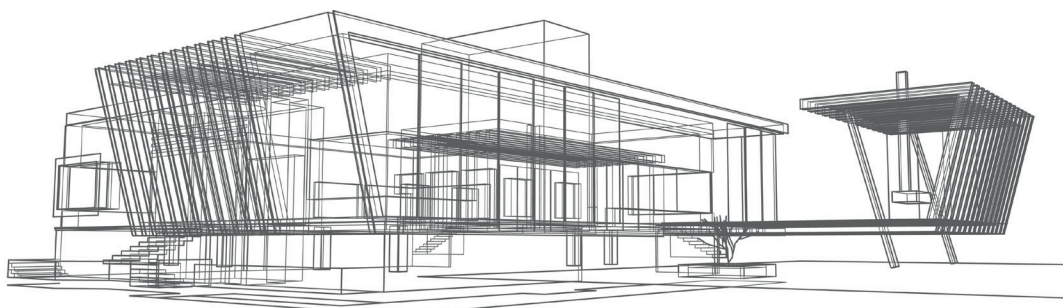
DESIGN  
MILANO



reddot design award

**Merlion**  
Awards

**DESIGN PLUS**  
powered by: light+building







## Systems that integrate with one another.

The technological evolution championed by Comelit in recent years has broken down the barriers between the various systems used to adjust and manage different functions within home and work environments.

### VIDEO ENTRY

2-wire and digital IP systems, the best technical solution for responding to all application requirements.

### ANTI-INTRUSION

A complete system capable of fulfilling all security requirements with wired systems or via radio.

### VIDEO SURVEILLANCE

A comprehensive range of products for video surveillance. Analogue, IP and HD over coaxial cable.

### HOME AUTOMATION

Home automation system offering full control of your own space for optimum comfort and security.

### ACCESS CONTROL

Basic or Advanced access control system featuring Mifare technology.

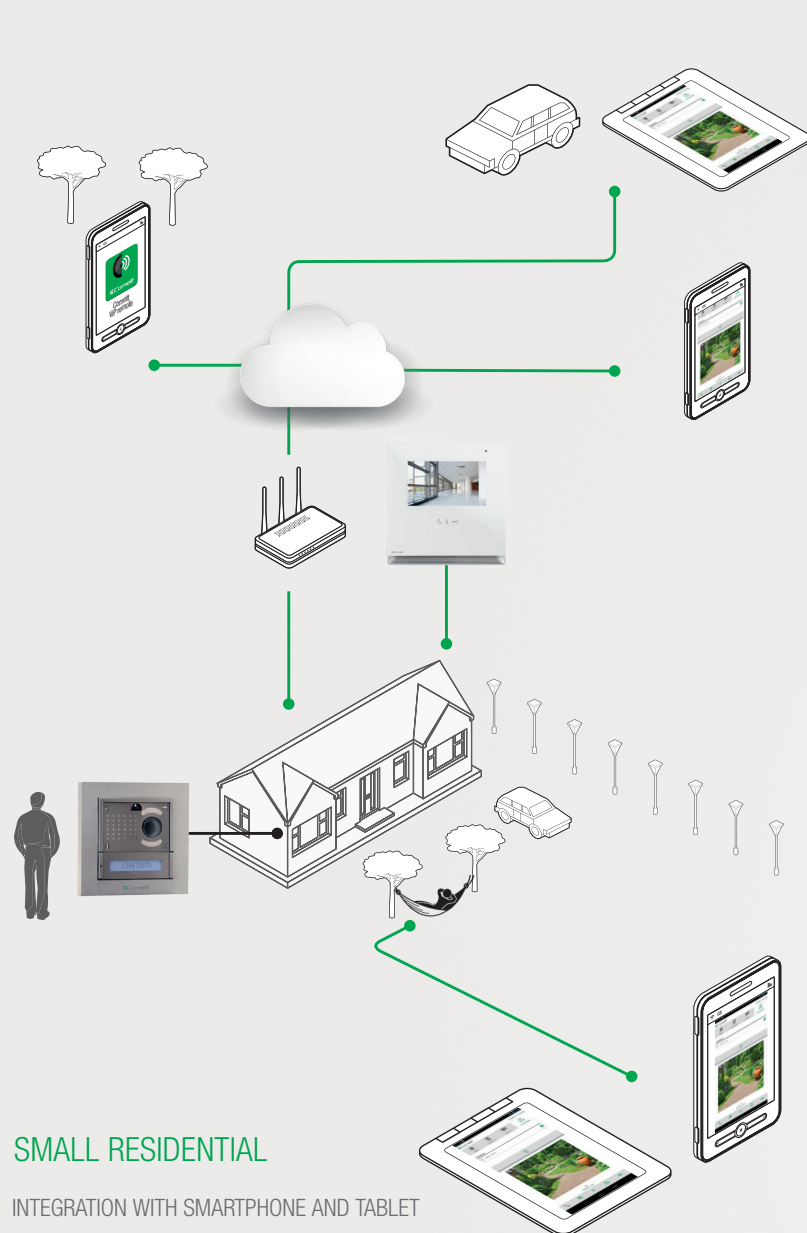


## VIP SYSTEM

VIP SYSTEM

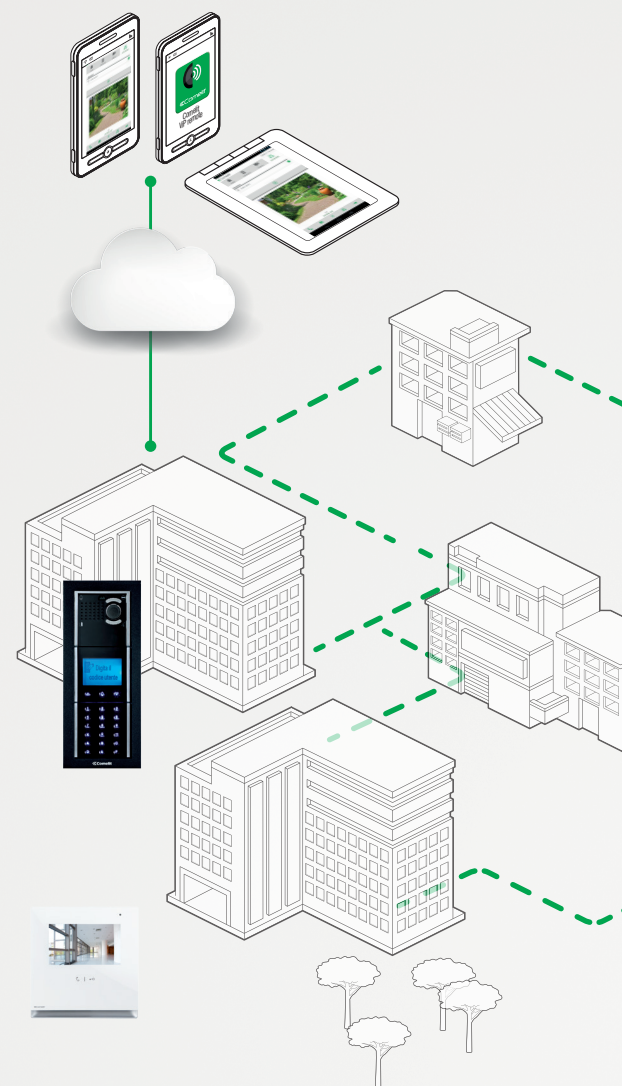
### A SYSTEM FOR ALL SETTINGS, EVEN THE MOST COMPLEX VARIATIONS

VIP System represents the evolution of video entry technology and the services connected to it, with a new dimension linked to data transmission offering performance suited to modern residential, commercial, industrial and advanced tertiary scenarios: from individual residences to large complexes, in new constructions, renovated buildings and modernised systems and structures alike. **Serves an unlimited number of users, with simultaneous conversations and no distance limitations. A single backbone on a LAN (specific or using existing networks), to which the devices are connected via an RJ45 plug.**



#### SMALL RESIDENTIAL

INTEGRATION WITH SMARTPHONE AND TABLET  
LOCAL AND REMOTE ANSWER  
AVAILABLE IN KIT FORM  
EASY INSTALLATION AND PROGRAMMING



#### MEDIUM/LARGE RESIDENTIAL SYSTEMS

UNLIMITED DISTANCES  
SYSTEM NEVER BUSY  
UNLIMITED USERS  
EXTENDIBLE NETWORK  
CENTRAL AND REMOTE PORTER SWITCHBOARD





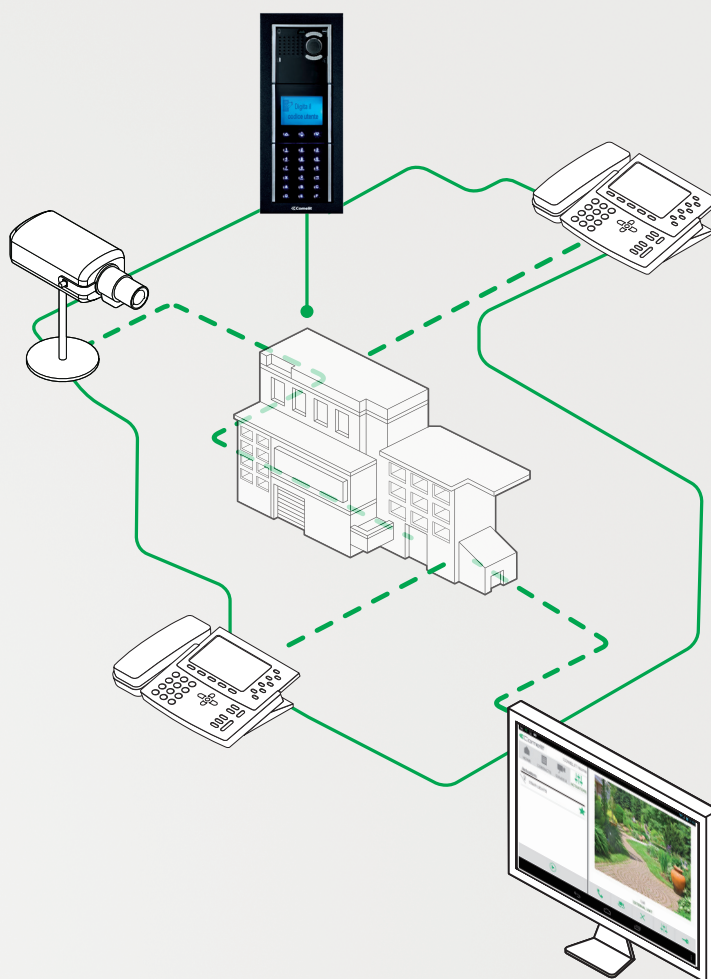
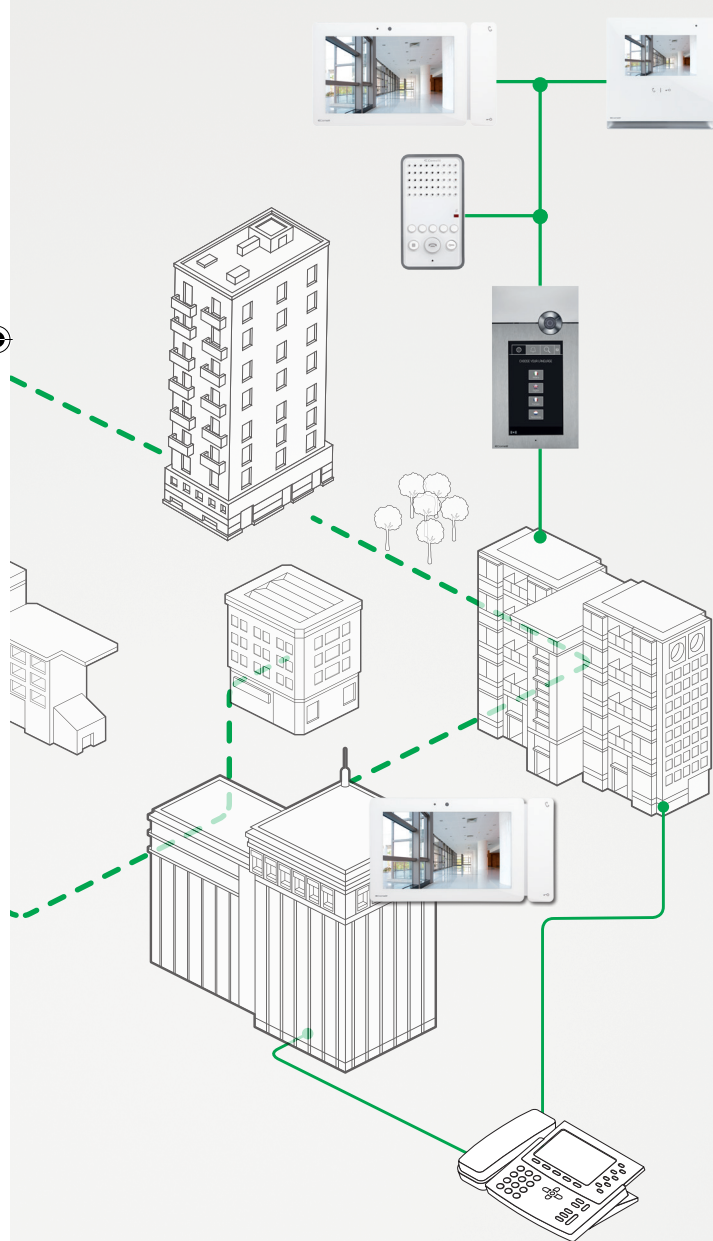
SMALL  
RESIDENTIAL



MEDIUM/LARGE  
RESIDENTIAL SYSTEMS



TERTIARY



### TERTIARY (INDUSTRIAL/COMMERCIAL)

- INTEGRATION WITH SIP DEVICES
- INTEGRATION WITH CCTV AND ACCESS CONTROL
- INTEGRATION WITH EXISTING NETWORKS
- CENTRAL AND REMOTE PORTER SWITCHBOARD





## NEW FEATURES OF THE ViP SYSTEM

ViP SYSTEM

# 1456B Multi-user gateway for apartment blocks



### ANSWER CALLS AS YOU LIKE.

The 1456B is a Multi-user Gateway for apartment blocks. An innovative solution using the Comelit ViP digital system for apartment blocks. Used to answer calls from an external unit via a ViP door entry monitor, Smartphone/Tablet via the Comelit ViP APP or GSM telephone or land line.

### ViP ENTRANCE PANEL



FROM DOOR  
ENTRY MONITOR



FROM  
SMARTPHONE/  
TABLET



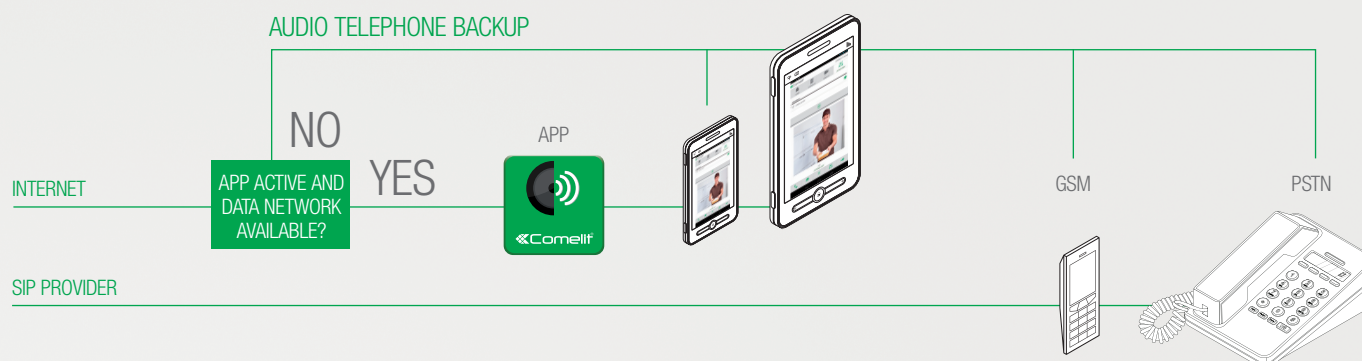
FROM LAND LINE  
OR GSM



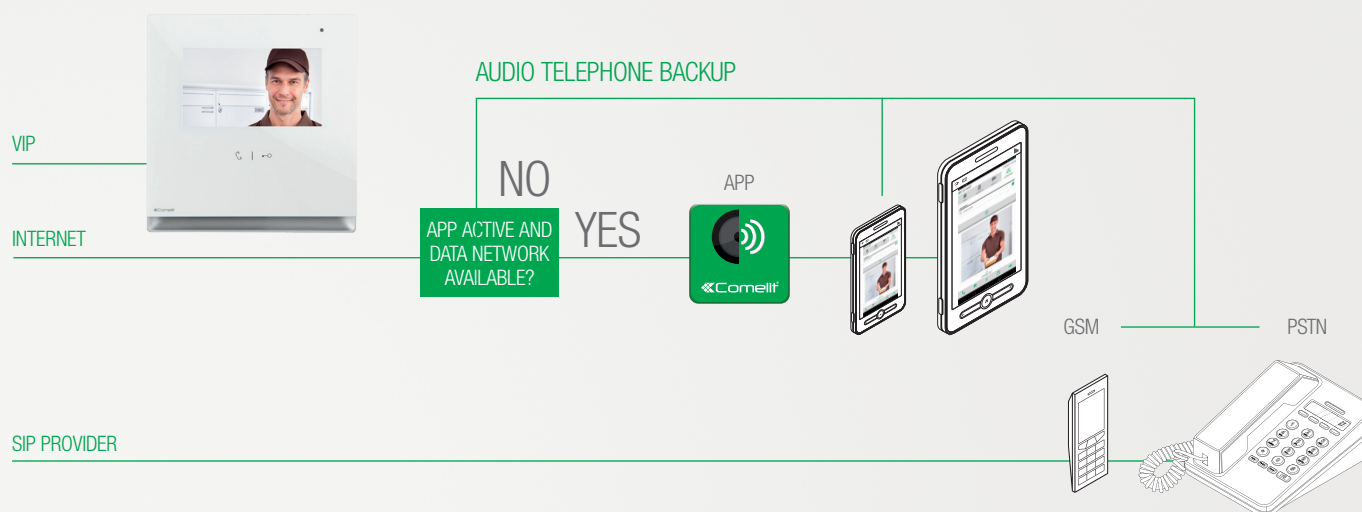
## 3 TYPES OF LICENSE AVAILABLE

1456B can manage 3 types of license: Master, Slave and Phone. Each license can be purchased in 5 different sizes (1, 10, 50, 100, 200 users) and can be increased at any time.

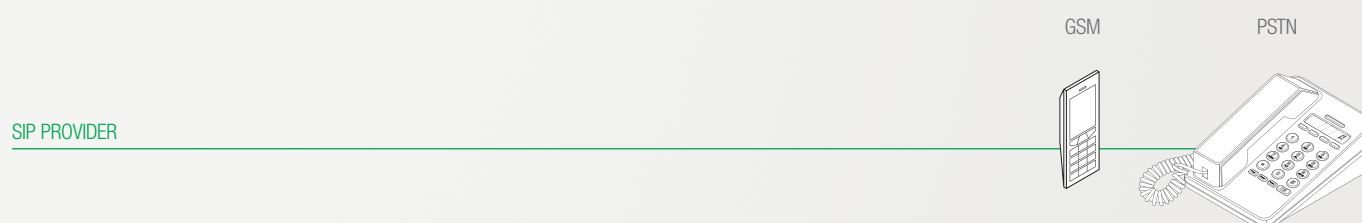
### MASTER



### SLAVE



### PHONE

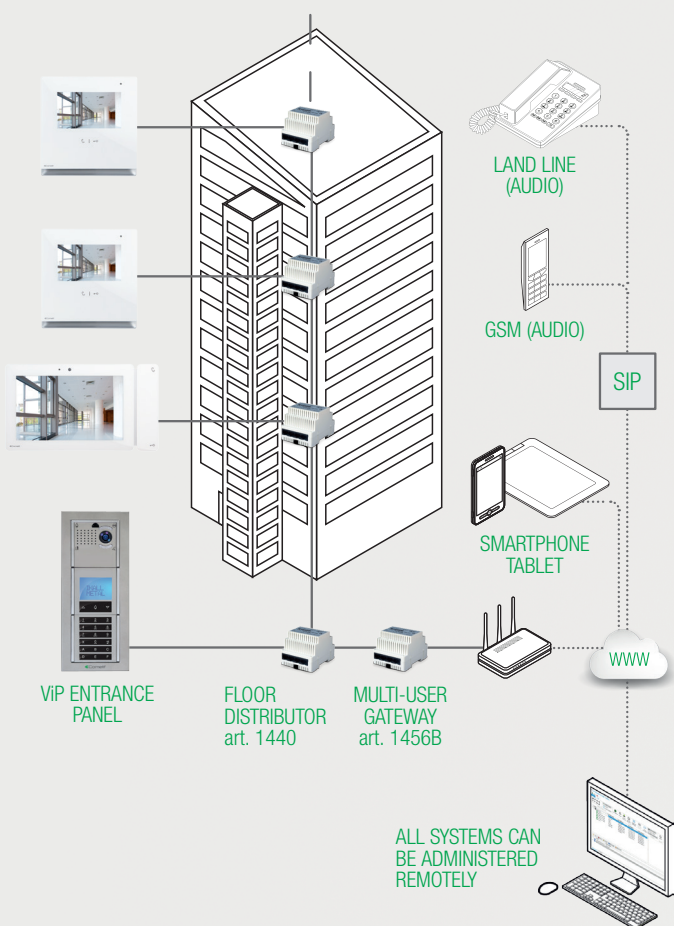


## NEW FEATURES OF THE VIP SYSTEM

VIP SYSTEM

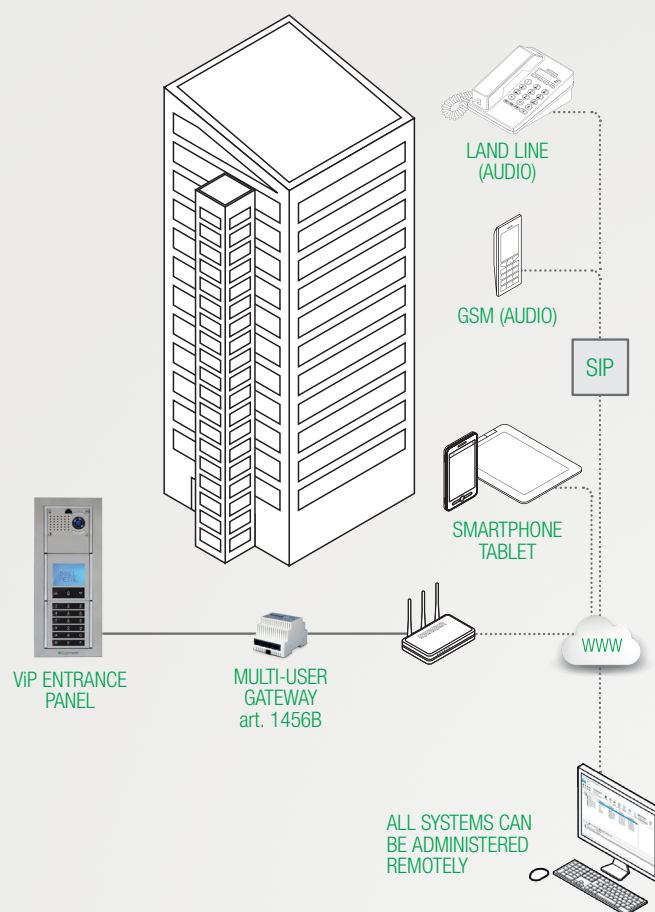
### 1456B, TECHNICAL DETAILS

#### SLAVE LICENSE



- Answer video calls remotely via Smartphone or Tablet
- Answer audio calls on land lines or Gsm telephones
- Audio telephone backup if data line is unavailable
- Manage up to 15 devices per single license (Door entry monitor, Smartphone, Tablet, GSM telephone or land line)

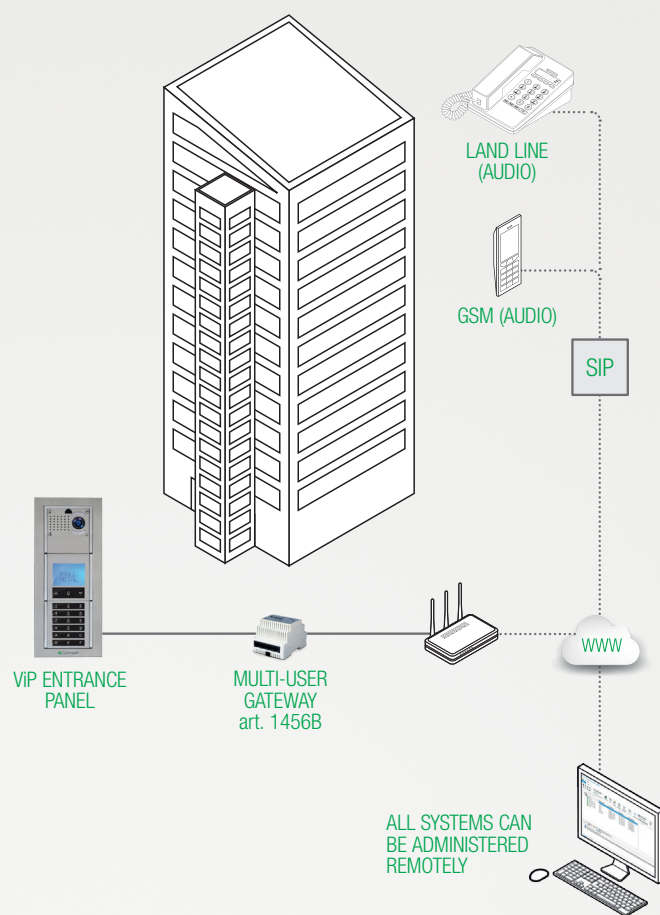
#### MASTER LICENSE



- Answer video calls remotely via Smartphone or Tablet
- Answer audio calls on land lines or Gsm telephones
- Telephone backup if data line is unavailable
- Manage up to 15 devices per license (Smartphone, Tablet, GSM telephone or land line)



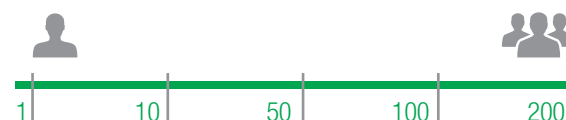
## PHONE LICENSE



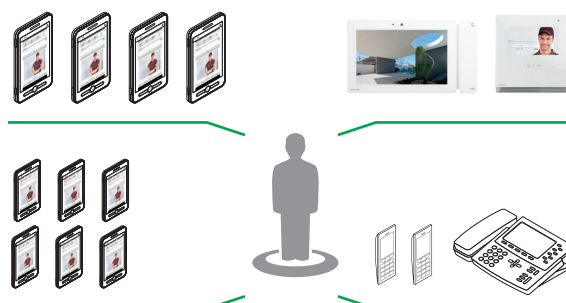
- Answer audio calls on land lines or GSM telephones

## LICENCE FEATURES

3 TYPES OF LICENSE, 5 USER PACKAGES (in any combination)

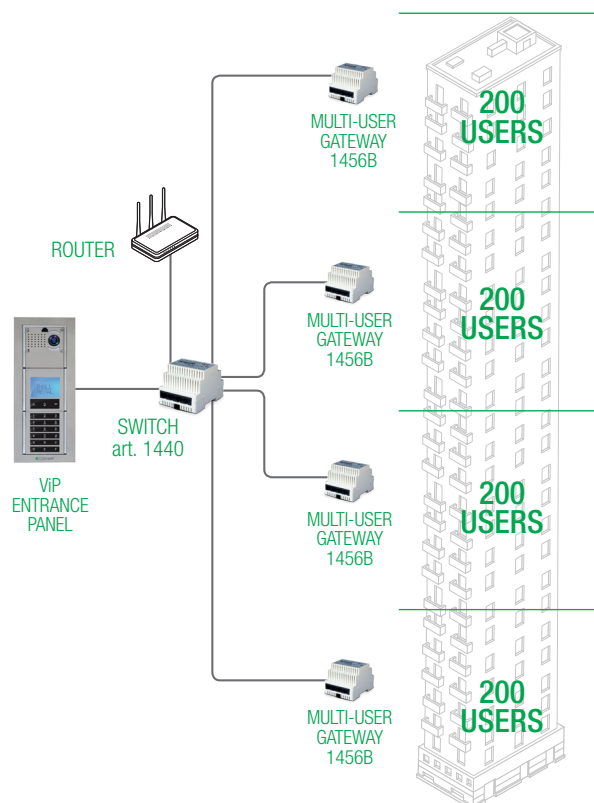


EVERY SINGLE USER CAN ASSOCIATE UP TO 15 DEVICES



## SCALABILITY

Every Multi-User Gateway can manage up to maximum of 200 users. In the case of more than 200 users, more than one Gateway can be implemented. This can also be done subsequently to the initial installation.





## NEW FEATURES OF THE ViP SYSTEM

VIP SYSTEM



## COMELIT VIP REMOTE A DOOR ENTRY MONITOR WHEREVER YOU ARE

The Comelit App manages door entry and other advanced functions even from 3G or higher networks. The Comelit App is available for both smartphones and tablets. The APP can be downloaded free of charge from the App Store or Google Play



**Comelit ViP Remote**

Remote door entry monitor  
management also via Wi-Fi/3G

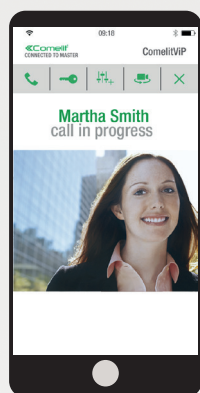
Free download





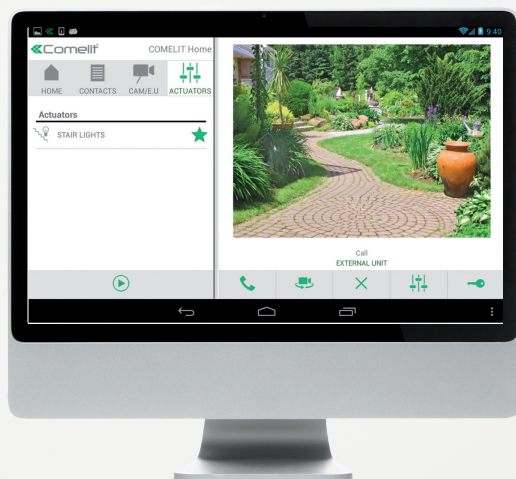
Comelit ViP Remote allows

- Answer calls from external units
- View and manage cameras
- Make and receive calls from other internal units (in the contacts list) and from other devices
- view of videos recorded from external units and CCTV cameras (VIDEO MEMORY)
- control actuators to manage lights, gates, barriers, etc.



## ANSWERING FROM PC/MAC

All door entry monitor functions can also be managed and implemented on a PC/MAC using the special PC-Intercom software (code 1454K). The software is available on USB memory stick.



### PC Intercom

Same functions as the APP for PC/Mac.



## NEW FEATURES OF THE VIP SYSTEM

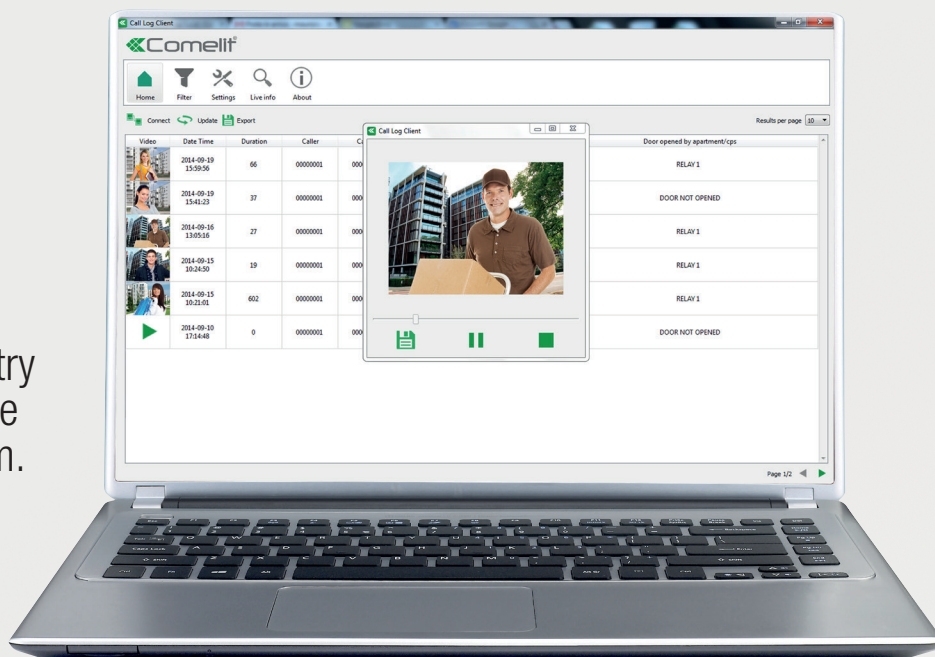
VIP SYSTEM

# Call Log

Server device for recording, playing, storing video door entry and concierge calls to increase the security of your VIP system.



art. 1459



COMELIT CLIENT SOFTWARE



## SYSTEM CONFIGURATION

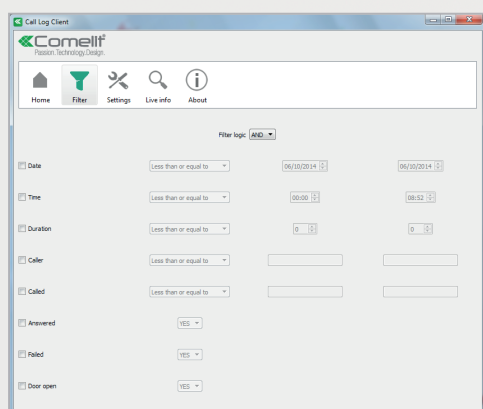
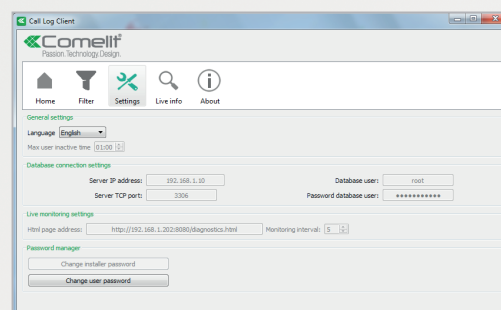
This function can be used to set the following parameters:

- maximum duration of each automatic recording;
- single or grouped selection of the external units to be recorded;
- single or grouped selection of the internal units and/or switchboards to be recorded;
- storage period (1-60 days).



## SYSTEM SECURITY

- password protection for access to software
- password protection for system configuration



## FILTER FUNCTION

The FILTER function can be used to select the saved video clips and play them according to the following parameters:

- date
- time
- external unit making the call
- internal unit
- switchboard receiving the call

## EXPORT RECORDINGS

Export recordings to removable storage (e.g. USB).

## PLAY RECORDINGS

Play and manage recordings via Play/Stop commands.

## RECORD VIDEO

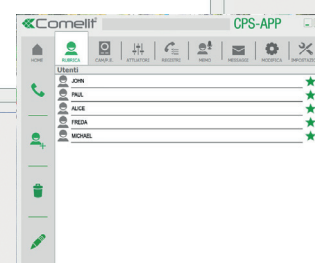
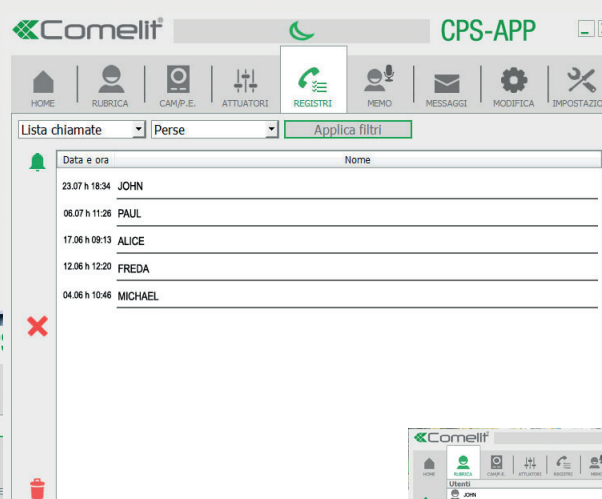
Record the video stream from external units when a call is made to switchboards and/or apartments (audio recording may also be available as an option).



# Switchboard software for PC



## RECORDING ARCHIVE FOR CALLS



## USER DIRECTORY

1448

## SWITCHBOARD SOFTWARE FOR PC FOR VIP SYSTEM

Software on USB micro-key for simple management and control of all the typical functions of the porter switchboard. In addition to the classic functions of VIP video door entry monitors, it receives and forwards audio/video calls and manages alarms in the apartments; it has a directory of actuators, internal and external units which, when programmed, easily identify the apartment and the external unit which made the call. It also has a recordings archive which stores all calls (made, managed, lost and forwarded) from internal/external units and alarms. It can also send messages to internal units. The software comes with a user license. To work correctly, the USB micro-key must always be inserted in the computer.



## NEW FEATURES OF THE VIP SYSTEM

VIP SYSTEM

### VIP KIT FOR WI-FI / 3G APP WITH ICONA DOOR ENTRY MONITOR



LOCAL

REMOTE

The kit allows use of the video entry phone system via a door entry monitor as well as tablets and smartphones on the Wi-Fi network, or remotely on 3G (or higher) networks. The gateway in the pack allows connection of other devices (Comelit VIP door entry monitors or PCs) besides the door entry monitor supplied. In all cases, the gateway should be connected to an ADSL router or another device guaranteeing local Wi-Fi and mobile 3G connectivity. Depending on bandwidth limitations, the gateway can serve up to 15 appliances (including door entry monitors, smartphones, tablets and PCs) with 4 simultaneous door entry monitor streams. It also allows "intercom" communication between all of the 16 devices served. For mobile devices, whenever both modes are available and enabled, the APP automatically switches connection, from Wi-Fi to 3G and vice-versa.



**ART. 8531**

IKALL METAL AND ICONA KIT, GATEWAY SLAVE. H264



**Comelit VIP Remote**

### WI-FI / 3G APP VIP KIT



LOCAL

REMOTE

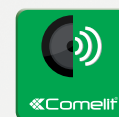
The kit allows use of the video entry phone system via tablets and smartphones on the Wi-Fi network, or remotely on 3G (or higher) networks. The gateway in the pack allows connection of a further 2 devices (Comelit VIP door entry monitors or PCs). In all cases, the gateway should be connected to an ADSL router or another device guaranteeing local Wi-Fi and mobile 3G connectivity. Depending on bandwidth limitations, the gateway can serve up to 16 appliances (including door entry monitors, smartphones, tablets and PCs) with 4 simultaneous door entry monitor streams.

It also allows "intercom" communication between all of the 16 devices served. For mobile devices, whenever both modes are available and enabled, the APP automatically switches connection, from Wi-Fi to 3G and vice-versa.



**ART. 8513HIM**

SINGLE-FAMILY KIT W/IKALL METAL AND MASTER GATEWAY. VIP H264



**Comelit VIP Remote**

FOR FURTHER INFORMATION SEE PAGE 41

FOR FURTHER INFORMATION SEE PAGE 41



## VIP KIT FOR WI-FI APP



LOCAL

The kit allows use of the video entry phone system via a door entry monitor as well as tablets and smartphones on the Wi-Fi network. The door entry monitor system should nevertheless be connected to an ADSL router or another device guaranteeing Wi-Fi connectivity. Depending on bandwidth limitations, up to 16 devices (including door entry monitors, smartphones, tablets and PCs) with 4 simultaneous door entry monitor streams can be connected to the system. It also allows "intercom" communication between all of the 16 devices served. Mobile devices can only connect to the system via the Wi-Fi network.



**ART. 8521**

IKALL METAL AND ICONA KIT.VIP H264 SYSTEM



**ART. 8522**

2-FAMILY IKALL AND VIP ICONA H264 KIT



Comelit VIP Remote

FOR FURTHER INFORMATION SEE PAGE 41

## KIT WITH PC-INTERCOM



PC/MAC

The kit can be used to fully manage video entry phone calls via LAN (Ethernet or Wi-Fi). Simply insert the USB stick provided into the computer and install the software to receive calls and communicate with the external unit. This software comes complete with a user license and is available for both PC and MAC systems. The key must always be plugged into the computer to ensure correct operation.



**ART. 8501HIM**

SING.-FAMILY KIT W/ IKALL METAL & PC INTERCOM VIP H264 SYST.



**ART. 8504H**

PC INTERCOM KIT WITH VANDALCOM ENTRANCE PANEL - SINGLE USER



FOR FURTHER INFORMATION SEE PAGE 42



## ADVANTAGES OF THE ViP SYSTEM

VIP SYSTEM

### THE NETWORK

In the ViP system, all devices are connected to a LAN (specific or shared), from the external unit to the furthest internal unit.

In comparison with traditional analogue video entry technology, the network using digital protocol allows easier system configuration without laborious or unusual procedures, even in the case of updates, which become extremely flexible and convenient. Installation, commissioning and reconfiguration can be carried out easily, in complete safety, while the network is enabled.



MULTISITE FUNCTION



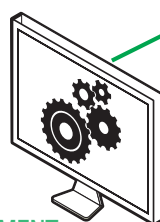




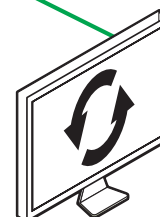
INTEGRATION WITH  
SMARTPHONE AND TABLET  
INTEGRATION WITH PC



EASY PROGRAMMING



REMOTE MANAGEMENT



CAN BE UPDATED

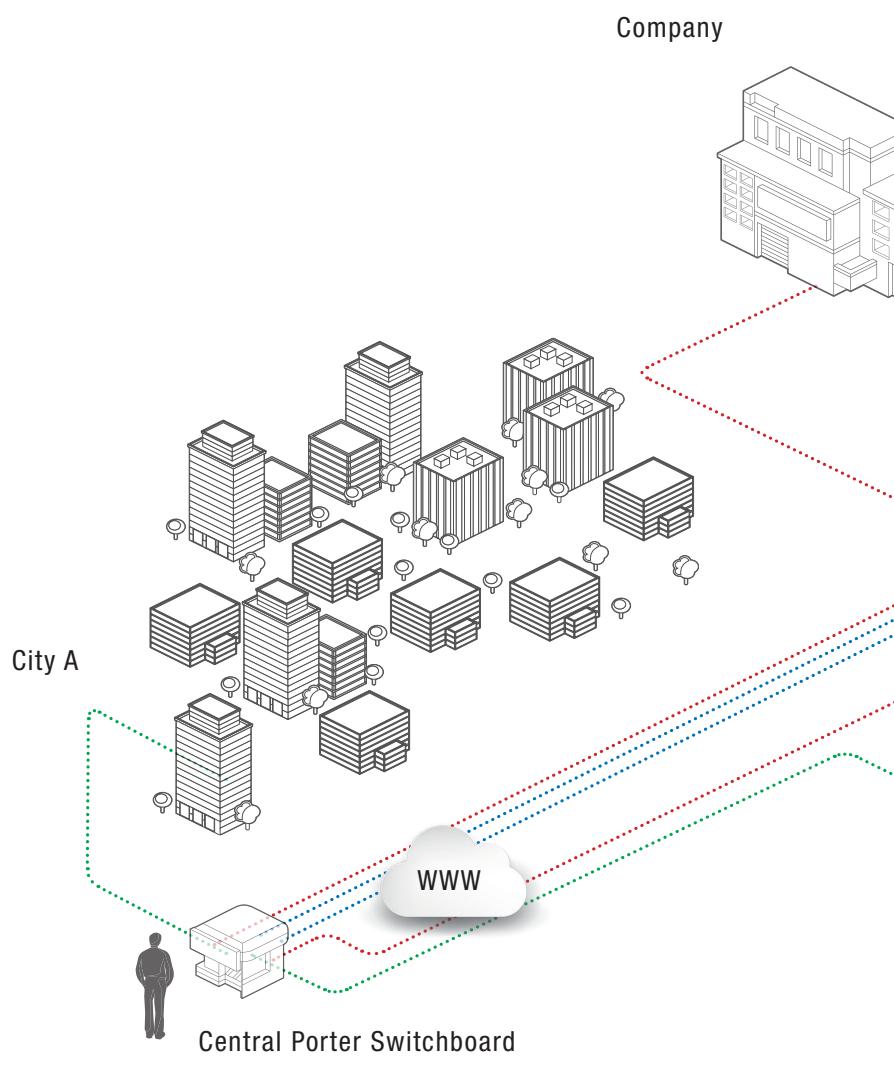


## ADVANTAGES OF THE ViP SYSTEM

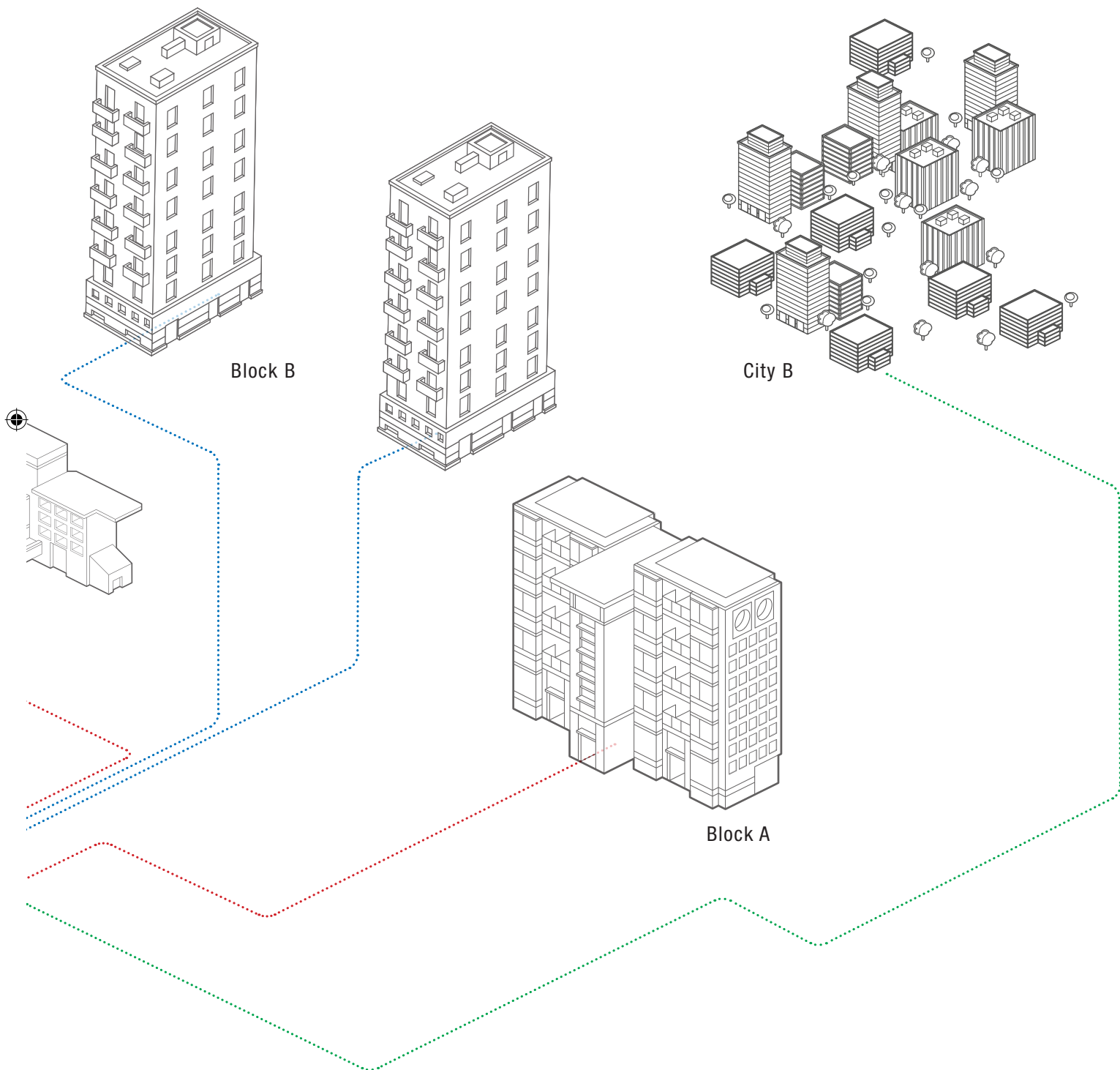
VIP SYSTEM

### MULTISITE

Comelit also offers a response to the requirements of **multisite installations in which several ViP systems are interconnected via the Internet**, for example, for the remote control of communications between several company offices or between several scattered sites and central porter switchboard stations. Comelit is capable of designing and supplying the infrastructures required for correct operation of this type of system, with ad hoc solutions agreed with system managers.







## ADVANTAGES OF THE ViP SYSTEM

VIP SYSTEM

### NO LIMIT

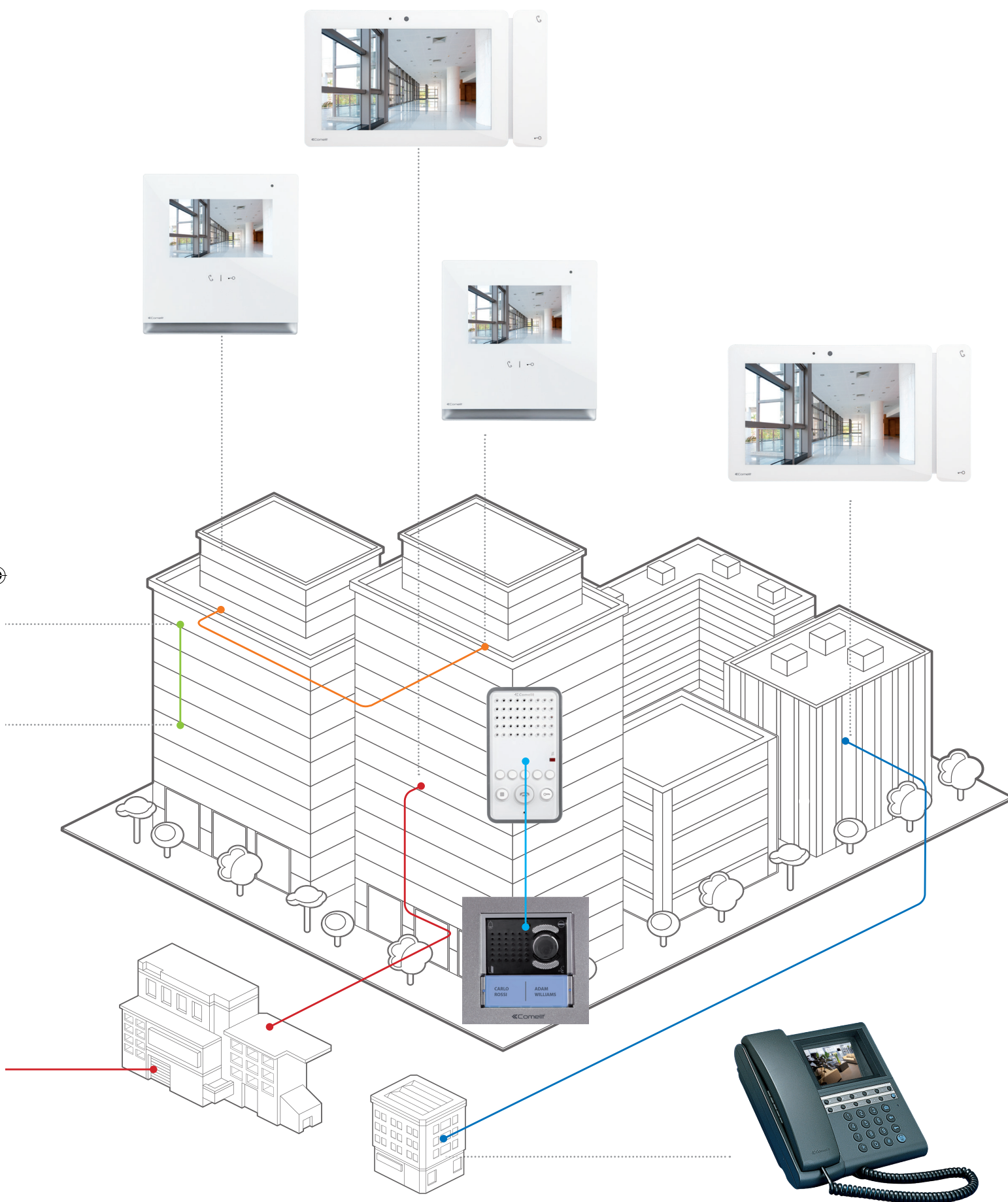
The ViP system offers maximum freedom of configuration and extraordinary flexibility in the connection of devices without specific technical or installation constraints. ViP surpasses the limits of traditional video entry technology: distance between devices, network extension and number of switchboards and external units. Furthermore, the technology with digital protocol allows simultaneous audio-video conversations to take place without the system ever being "busy".



- APARTMENT - APARTMENT
- SECONDARY UNIT - APARTMENT
- MAIN UNIT - APARTMENT
- BUILDING - BUILDING
- SWITCHBOARD - APARTMENT







## ADVANTAGES OF THE ViP SYSTEM



### “PEER TO PEER” ARCHITECTURE

The ViP system is based on “peer to peer” architecture which does not require the presence of a network server: each device can communicate directly with any of the other elements in the network independently. All users can communicate with each other via their own internal units or with the switchboards.

This means there are no “critical” devices or structural hubs that could cause a total blackout. Any breakdown of an individual device does not affect the other network components.

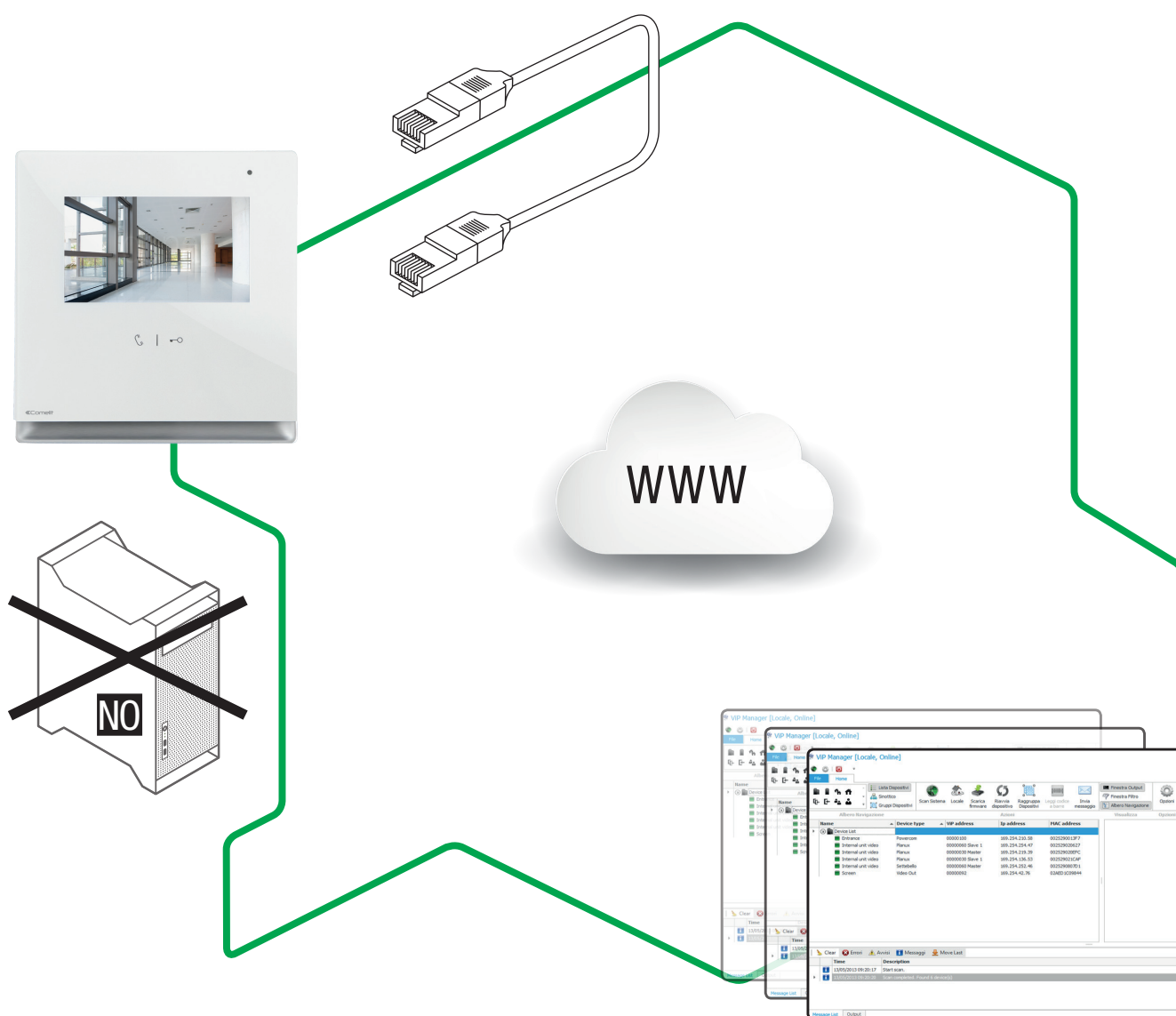
### EASY TO PROGRAM

ViP system programming does not require specific I.T. skills and is carried out by means of the special ViP Manager software, a tool created specifically to make system configuration quicker and easier.

All connected devices can automatically assume the network address (Auto IP) without having to work selectively on each individual user. Plus, once they are connected to the network, all devices can be fully configured without physical access to those devices being necessary.

ViP also offers the option of remotely sending text or image messages to all users registered on the network, or to individual recipients.





## REMOTE MANAGEMENT

All system **configuration functions** can be implemented remotely via the **Internet**.

This means device programming changes do not require direct action on the system itself, which **reduces costs while increasing the quality of the service provided**.

## EASY TO UPDATE

All devices can be reconfigured without direct action being taken on **those pieces of equipment**. The innovative VIP Manager software can, in fact, be used to change the original programming and add new functions to VIP devices without having to access the rooms in which they are installed. **The list of user names can also be entered, saved and updated from a remote station.**

## ADVANTAGES OF THE ViP SYSTEM

VIP SYSTEM

### INTEGRATION WITH EXISTING NETWORKS

ViP devices can also be connected to existing LANs, which means the functions of the digital video entry system can be added without the need for special wiring.

In this case the ViP monitors and external units coexist and operate on the same LAN with other equipment.

Device addressing can take place through DHCP or with a static IP.

### INTEGRATION WITH VOIP DEVICES

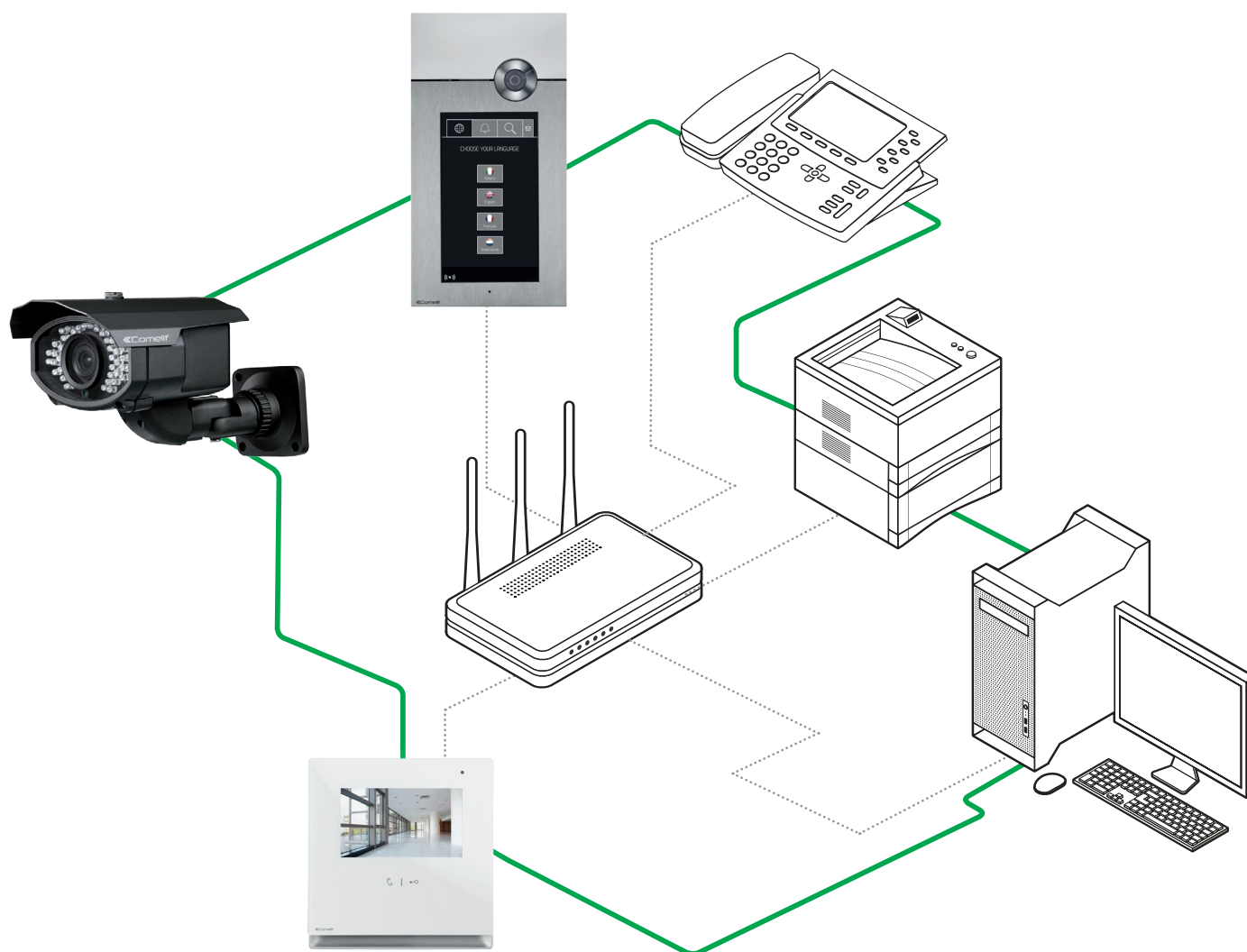
VoIP devices with Sip protocol can also be integrated into the ViP system by means of the ViP2Sip interface, which can be used to make a direct call from a ViP external unit to Voip telephones connected to Sip switchboards: in practice the Voip telephone placed on a desk or anywhere in the home or office becomes an internal unit for answering calls and, for example, opening gates, doors, entrances, etc.

### INTEGRATION WITH CCTV AND ACCESS CONTROL

The potential applications of the ViP system allow the use of the same IP network for integrating security and video surveillance functions into the video entry phone system, such as viewing CCTV cameras and access control.









## ADVANTAGES OF THE VIP SYSTEM

VIP SYSTEM





# ADVANTAGES FOR THE MANAGING AGENT AND SYSTEM MANAGER

## DYNAMISM

ViP can be used to offer a system with innovative functions, for an excellent quality video entry service

## SCALABILITY

The flexible features of digital technology allow easy system expansion in accordance with specific requirements

## EASY TO UPDATE

The system can be updated without the need for structural work: this guarantees function development and excellent performance, and ensures the system holds its value over time

## INTEGRATION

Network infrastructures installed for other services can easily be used, no need for special infrastructures

## USABILITY

ViP offers the option of remotely sending informative text and/or image messages directly to internal units in the apartments

## COMPETITIVENESS

ViP minimises wiring, commissioning and maintenance costs





## ADVANTAGES OF THE VIP SYSTEM

VIP SYSTEM





# ADVANTAGES FOR THE INSTALLER

## SIMPLICITY

In system planning and costing

## PRACTICAL

Thanks to fewer references plus easy installation and connection

## FLEXIBILITY

With a system structure which is easy to reconfigure

## PROGRAMMABLE

Entirely using the PC software, without directly working on the devices

## CONVENIENCE

With the use of standard wires which are easy to source

## SIMPLICITY

Device automatic addressing means that no indepth knowledge of communication networks is required

## FLEXIBILITY

Includes access control and lift call management functions

## RELIABILITY

Each device can operate independently (guaranteeing greater sturdiness)

## USABILITY

Device FW updating can also take place remotely

## INTEGRATION

With the option of interfacing with other technological services for communication, security and comfort

## ACCESSIBILITY

System maintenance and management can also be carried out remotely





## ADVANTAGES OF THE VIP SYSTEM

VIP SYSTEM





# ADVANTAGES FOR THE USER

## QUALITY

Cutting-edge technology for an excellent video entry service, ensuring optimal intercommunication between outdoors and indoors and vice-versa

## FREEDOM

Answering video entry phone calls from a smartphone/ tablet

## AVAILABILITY

With its integrated video entry answering service, messages can be saved to an SD card

## SERVICE

ViP can be used to record messages for playback at the external unit if you are away

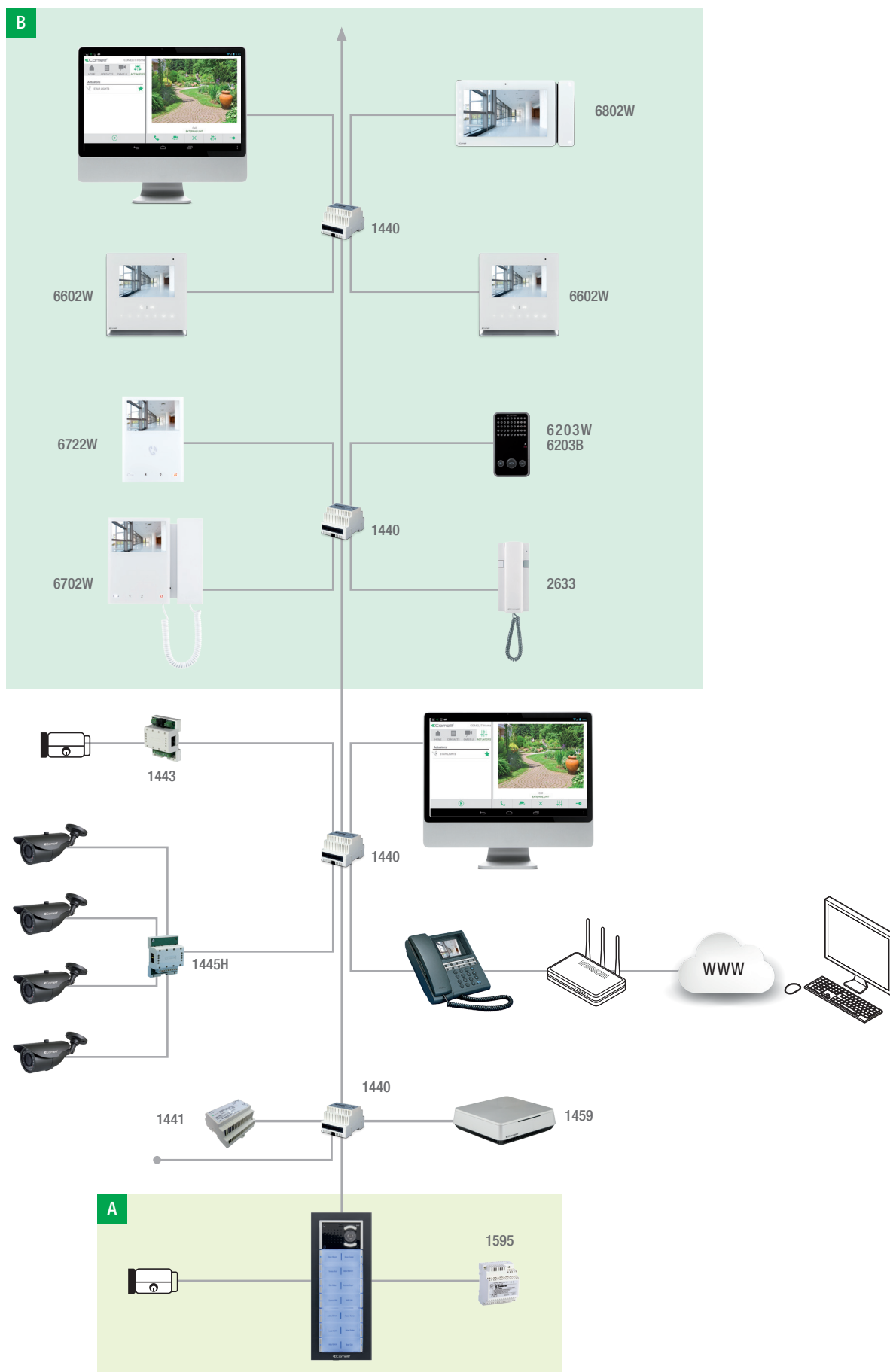
## SECURITY

Connection with porter switchboards allows the transmission of intervention requests in case of alarm or panic events. ViP also offers viewing of rooms from internal units using security cameras connected to the system

## APPLICATION DIAGRAMS

VIDEO ENTRY PHONE SYSTEM CONSISTING OF 1 ANALOGUE AUDIO/VIDEO INPUT  
AND 1 AUDIO/VIDEO RISER

VIP SYSTEM





## A MAIN AUDIO/VIDEO ENTRANCE PANEL

ANALOGUE AUDIO/VIDEO ENTRANCE PANEL

	3110/1	3110/2	3110/3	3110/4	3311/1S	3311/2S	3311/3S	3311/4S	33410	33411	33412	33433	33434	33436	3336	4682HC	1595	1441	1440
Users																			
1	1				1					1						1	1	1	1
2	1				1						1					1	1	1	1
3		1				1			1			1				1	1	1	1
4		1				1			1				1			1	1	1	1
5-6	1					1			1					1		1	1	1	2
7-8		1				1					1			1		1	1	1	2
9-10			1				1		1				1	1		1	1	1	3
11-12		1				1		1						2		1	1	1	3
13-14			1				1				1			2		1	1	1	4
15-16				1				1	1				1	2		1	1	1	4
17-18				1				1	1					3		1	1	1	5
19-20				1				1			1			3		1	1	1	5
21-22			2				2		1				1	3	1	1	1	1	6
23-24			2				2		1					4	1	1	1	1	6
25-26			2				2				1			4	1	1	1	1	7
27-28			2				2		1				1	4		1	1	1	7
29-30			2				2		1					5		1	1	2	8
31-32			2				2				1			5		1	1	2	8
33-34				2				2	1				1	5	1	1	1	2	9
35-36				2				2	1					6	1	1	1	2	9
37-38				2				2			1			6	1	1	1	2	10
39-40				2				2	1				1	6		1	1	2	10
41-42				2				2	1					7		1	1	2	11
43-44				2				2			1			7		1	1	2	11
45-46			3				3		1				1	7		1	1	2	12
47-48			3				3		1					8		1	1	2	12
49-50			3				3				1			8		1	1	2	13

## B INTERNAL UNITS

INTERNAL UNITS

6602W	6802W	6203W 6203B	2633
1	1	1	1
2	2	2	2
3	3	3	3
4	4	4	4
5-6	5-6	5-6	5-6
7-8	7-8	7-8	7-8
9-10	9-10	9-10	9-10
11-12	11-12	11-12	11-12
13-14	13-14	13-14	13-14
15-16	15-16	15-16	15-16
17-18	17-18	17-18	17-18
19-20	19-20	19-20	19-20
21-22	21-22	21-22	21-22
23-24	23-24	23-24	23-24
25-26	25-26	25-26	25-26
27-28	27-28	27-28	27-28
29-30	29-30	29-30	29-30
31-32	31-32	31-32	31-32
33-34	33-34	33-34	33-34
35-36	35-36	35-36	35-36
37-38	37-38	37-38	37-38
39-40	39-40	39-40	39-40
41-42	41-42	41-42	41-42
43-44	43-44	43-44	43-44
45-46	45-46	45-46	45-46
47-48	47-48	47-48	47-48
49-50	49-50	49-50	49-50

### NOTES

Reserve one output of switch art. 1440 for every additional device

The flush-mounted or wall-mounted box is required for 6602W and 6802W.

PORTER SWITCHBOARD ART. 1952

PORTER SWITCHBOARD PC SOFTWARE ART. 1448

ACTUATOR MODULE ART. 1443

CAMERA MODULE 1445H

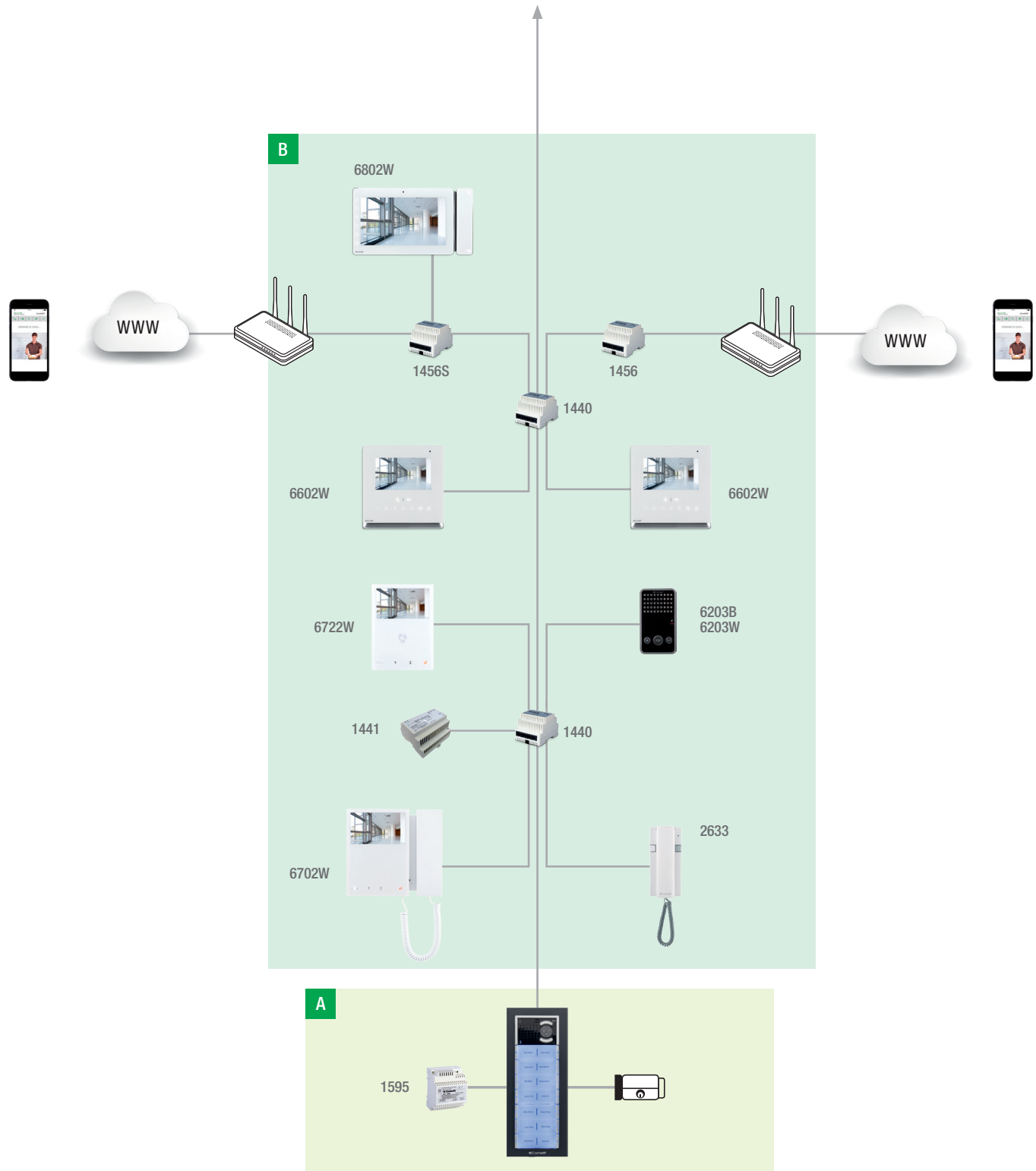
COMELIT IP CAMERAS 100 SERIES MODEL

CALL LOG ART. 1459

PC DOOR ENTRY MONITOR ART. 1454



## VIP SYSTEM





## A MAIN AUDIO/VIDEO ENTRANCE PANEL

ANALOGUE AUDIO/VIDEO ENTRANCE PANEL

	3110/3	3311/3S	33410	3360B	4682HC	1595	1441	1440
Users								
1	1	1	1	1	1	1	1	1
2	1	1	1	1	1	1	1	1
3	1	1	1	1	1	1	1	1
4	1	1	1	1	1	1	1	1
5-6	1	1	1	1	1	1	1	2
7-8	1	1	1	1	1	1	1	2
9-10	1	1	1	1	1	1	1	3
11-12	1	1	1	1	1	1	1	3
13-14	1	1	1	1	1	1	1	4
15-16	1	1	1	1	1	1	1	4
17-18	1	1	1	1	1	1	1	5
19-20	1	1	1	1	1	1	1	5
21-22	1	1	1	1	1	1	1	6
23-24	1	1	1	1	1	1	1	6
25-26	1	1	1	1	1	1	1	7
27-28	1	1	1	1	1	1	1	7
29-30	1	1	1	1	1	1	2	8
31-32	1	1	1	1	1	1	2	8
33-34	1	1	1	1	1	1	2	9
35-36	1	1	1	1	1	1	2	9
37-38	1	1	1	1	1	1	2	10
39-40	1	1	1	1	1	1	2	10
41-42	1	1	1	1	1	1	2	11
43-44	1	1	1	1	1	1	2	11
45-46	1	1	1	1	1	1	2	12
47-48	1	1	1	1	1	1	2	12
49-50	1	1	1	1	1	1	2	13

## B INTERNAL UNITS

INTERNAL UNITS

6602W	6802W	6203W 6203B	2633
1	1	1	1
2	2	2	2
3	3	3	3
4	4	4	4
5-6	5-6	5-6	5-6
7-8	7-8	7-8	7-8
9-10	9-10	9-10	9-10
11-12	11-12	11-12	11-12
13-14	13-14	13-14	13-14
15-16	15-16	15-16	15-16
17-18	17-18	17-18	17-18
19-20	19-20	19-20	19-20
21-22	21-22	21-22	21-22
23-24	23-24	23-24	23-24
25-26	25-26	25-26	25-26
27-28	27-28	27-28	27-28
29-30	29-30	29-30	29-30
31-32	31-32	31-32	31-32
33-34	33-34	33-34	33-34
35-36	35-36	35-36	35-36
37-38	37-38	37-38	37-38
39-40	39-40	39-40	39-40
41-42	41-42	41-42	41-42
43-44	43-44	43-44	43-44
45-46	45-46	45-46	45-46
47-48	47-48	47-48	47-48
49-50	49-50	49-50	49-50

## NOTES

Variants for Users who have the "Comelit ViP remote" APP for receiving video entry phone calls on a smartphone, whether locally over WiFi or remotely via 3G

### USER WITH MONITOR

1 x slave Gateway art. 1456S

1 x Monitor chosen by the user (see table above)

Comelit ViP remote APP available to download free of charge

### USER WITHOUT MONITOR

1 x slave Gateway art. 1456

Comelit ViP remote APP available to download free of charge

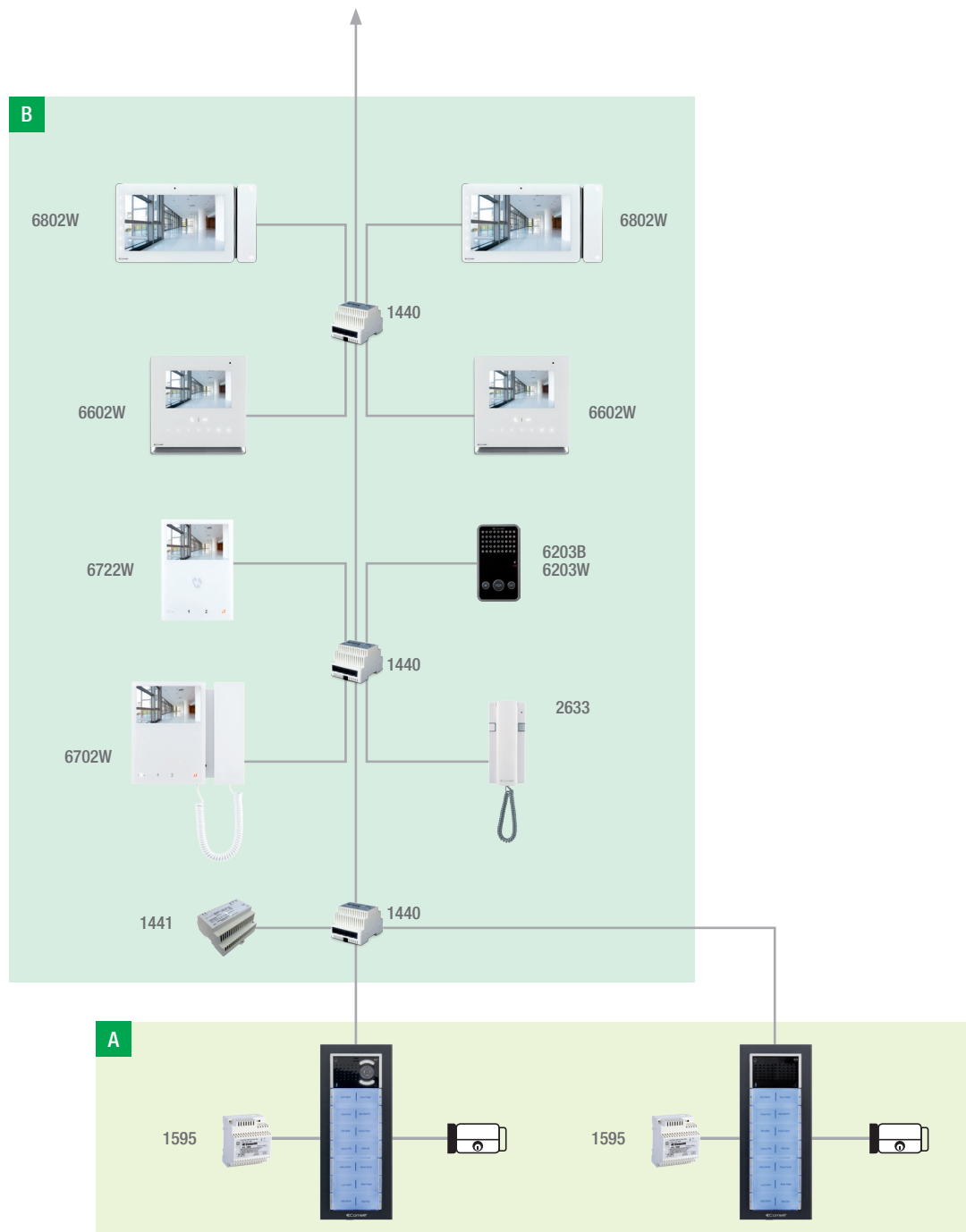
The flush-mounted or wall-mounted box is required for 6602W and 6802W.



## APPLICATION DIAGRAMS

VIDEO ENTRY PHONE SYSTEM CONSISTING OF 2 INPUTS: 1 AUDIO/VIDEO INPUT  
AND 1 AUDIO INPUT, 1 AUDIO/VIDEO RISER

VIP SYSTEM







## A ANALOGUE AUDIO/VIDEO ENTRANCE PANEL AND ANALOGUE AUDIO ENTRANCE PANEL

ANALOGUE AUDIO/VIDEO ENTRANCE PANEL AND ANALOGUE AUDIO ENTRANCE PANEL

	3110/1	3110/2	3110/3	3110/4	3311/1S	3311/2S	3311/3S	3311/4S	33410	33411	33412	33400	33401	33402	33433	33434	33436	3336	4682HC	1595	1441	1440
Users																						
1	2				2					1			1						1	2	1	1
2	2				2						1			1					1	2	1	1
3		2				2			1			1			2				1	2	1	1
4		2				2			1			1				2			1	2	1	1
5-6		2				2			1			1					2		1	2	1	2
7-8		2				2					1			1			2		1	2	1	2
9-10			2				2		1			1				2	2		1	2	1	3
11-12			2				2		1			1					4		1	2	1	3
13-14			2				2				1			1			4		1	2	1	4
15-16				2				2	1			1				2	4		1	2	1	4
17-18				2				2	1			1					6		1	2	1	5
19-20				2				2			1			1			6		1	2	1	5
21-22			4				4		1			1				2	6	2	1	2	1	6
23-24			4				4		1			1					8	2	1	2	1	6
25-26			4				4				1			1			8	2	1	2	1	7
27-28			4				4		1			1				2	8		1	2	1	7
29-30			4				4		1			1					10		1	2	2	8
31-32			4				4				1			1			10		1	2	2	8
33-34				4				4	1			1				2	10	2	1	2	2	9
35-36				4				4	1			1					12	2	1	2	2	9
37-38				4				4			1			1			12	2	1	2	2	10
39-40				4				4	1			1				2	12		1	2	2	10
41-42				4				4	1			1					14		1	2	2	11
43-44				4				4			1			1			14		1	2	2	11
45-46			6				6		1			1				2	14		1	2	2	12
47-48			6				6		1			1					16		1	2	2	12
49-50			6				6				1			1			16		1	2	2	13

## B INTERNAL UNITS

INTERNAL UNITS

6602W	6802W	6203W 6203B	2633
1	1	1	1
2	2	2	2
3	3	3	3
4	4	4	4
5-6	5-6	5-6	5-6
7-8	7-8	7-8	7-8
9-10	9-10	9-10	9-10
11-12	11-12	11-12	11-12
13-14	13-14	13-14	13-14
15-16	15-16	15-16	15-16
17-18	17-18	17-18	17-18
19-20	19-20	19-20	19-20
21-22	21-22	21-22	21-22
23-24	23-24	23-24	23-24
25-26	25-26	25-26	25-26
27-28	27-28	27-28	27-28
29-30	29-30	29-30	29-30
31-32	31-32	31-32	31-32
33-34	33-34	33-34	33-34
35-36	35-36	35-36	35-36
37-38	37-38	37-38	37-38
39-40	39-40	39-40	39-40
41-42	41-42	41-42	41-42
43-44	43-44	43-44	43-44
45-46	45-46	45-46	45-46
47-48	47-48	47-48	47-48
49-50	49-50	49-50	49-50

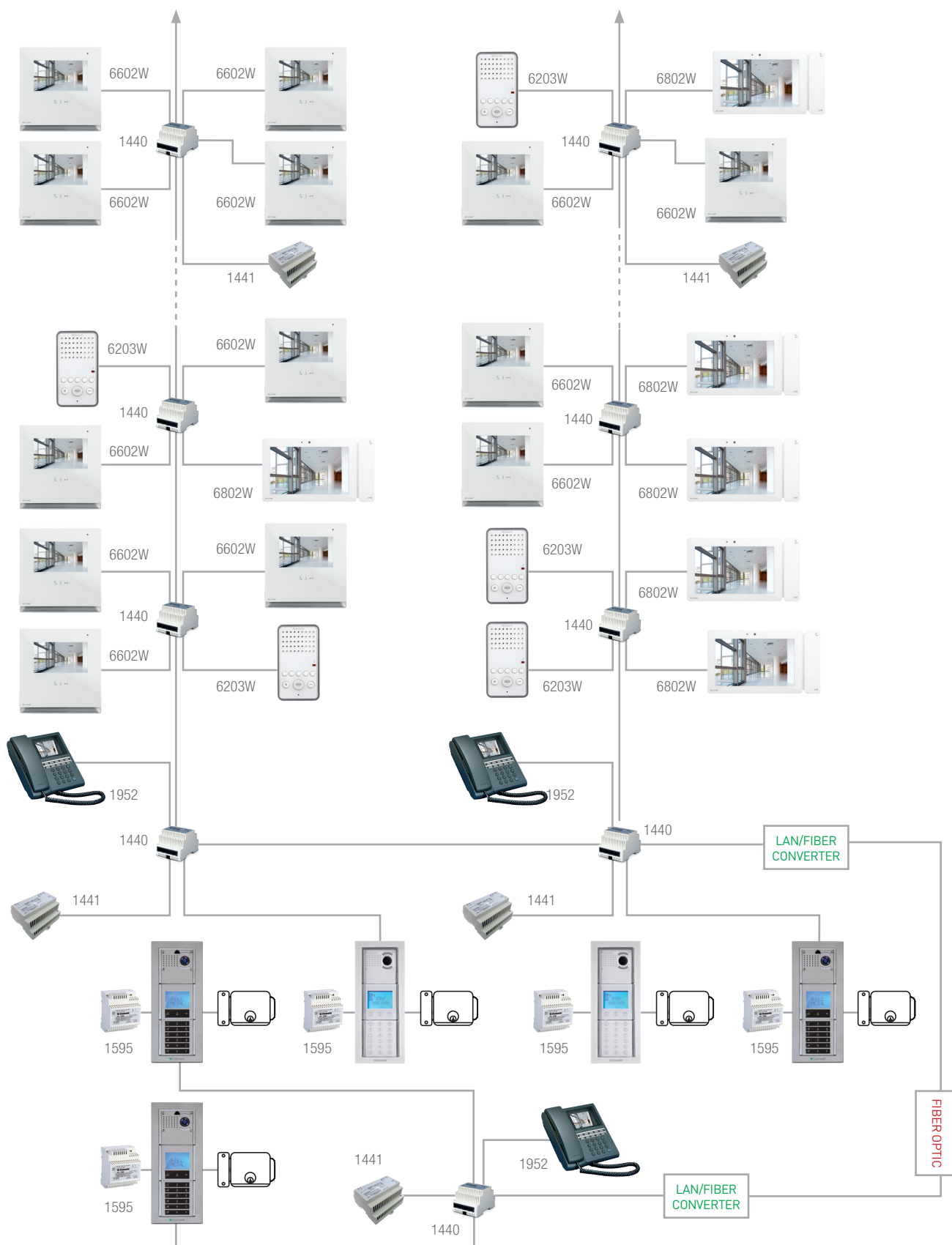
## NOTES

The flush-mounted or wall-mounted box is required for 6602W and 6802W.

## APPLICATION DIAGRAMS

VIDEO ENTRY PHONE SYSTEM CONSISTING OF 5 AUDIO/VIDEO INPUTS, 1 PORTER SWITCHBOARD. SYSTEM CAN BE EXPANDED WITH FIBRE OPTIC

VIP SYSTEM









# PRODUCT CATALOGUE

VIP SYSTEM

---

## KITS 41

KIT ACCESSORIES 42

---

## INTERNAL UNITS audio

EASYCOM 43

STYLE 44

---

## INTERNAL UNITS video

MAXI 44

ICONA 45

---

## EXTERNAL UNITS

3ONE6 TOUCH 46

3ONE6 SENSE 47

3ONE6 ANALOG 47

3ONE6 ACCESSORIES 48

ARCHITECTUS PRO 49

VANDALCOM 50

IKALL METAL 53

IKALL 57

ROMA 62

EMERGENCY PANELS 63

EASYCALL 64

---

## ACCESSORIES 65

---







## KITS

## KITS



8531

### IKALL METAL AND ICONA KIT, GATEWAY SLAVE. H264

The kit consists of 1 ViP kit external panel 4894HIM, 1 power supply unit art. 1595, 1 power supply unit art. 1441B, 1 slave gateway art. 1456S, 1 Icona monitor art. 6602WK, 1 flush-mounted box art. 6117, 1 wall-mounted bracket art. 6620. The kit is pre-programmed and ready to use, except for 1456S gateway configuration which must be carried out via internal web server. The kit can be expanded with other products from the VIP catalogue. Compatible with H.264 video format.



8521

### IKALL METAL AND ICONA KIT.VIP H264 SYSTEM

The kit consists of 1 colour audio/video unit art. 4682HKC, 1 module with 1 button art. 33411M, 1 flush-mounted box art. 3110/1, 1 frame complete with finishing frame art. 3311/1S, 1 power supply unit art. 1595, 1 power supply unit art. 1441B, 1 switch art. 1440, 1 Icona monitor art. 6602WK, 1 flush-mounted box art. 6117, 1 wall-mounted bracket art. 6620. The kit is pre-programmed and ready to use. The kit can be expanded with other products from the VIP catalogue. Compatible with H.264 video format.



8522

### IKALL METAL AND ICONA KIT.VIP H264 SYSTEM

The kit consists of 1 colour audio/video unit art. 4682HKC, 1 module with 1 button art. 33411M, 1 flush-mounted box art. 3110/1, 1 frame complete with finishing frame art. 3311/1S, 1 power supply unit art. 1595, 1 power supply unit art. 1441B, 1 switch art. 1440, 1 Icona monitor art. 6602WK, 1 flush-mounted box art. 6117, 1 wall-mounted bracket art. 6620. The kit is pre-programmed and ready to use. The kit can be expanded with other products from the VIP catalogue. Compatible with H.264 video format.

8513HIM

### SINGLE-FAMILY KIT W/IKALL METAL AND MASTER GATEWAY. VIP H264

The kit consists of 1 ViP kit external panel 4894IM, 1 power supply unit art. 1595, 1 power supply unit art. 1441B and 1 master gateway 1456. The kit is pre-programmed and ready to use, except for 1456 gateway configuration which must be carried out via internal web server. The kit can be expanded with other products from the VIP catalogue.





## PRODUCT CATALOGUE

### ACCESSORIES



8501HIM

#### SINGLE-FAMILY KIT W/IKALL METAL AND MASTER GATEWAY.VIP H264

The kit consists of 1 ViP kit external panel 4894IM, 1 power supply unit art. 1595, 1 power supply unit art. 1441B and 1 master gateway 1456. The kit is pre-programmed and ready to use, except for 1456 gateway configuration which must be carried out via internal web server. The kit can be expanded with other products from the VIP catalogue.



8504H

#### PC INTERCOM KIT WITH VANDALCOM ENTRANCE PANEL - SINGLE USER

The kit consists of 1 colour audio/video unit art. 4682HKC, 1 module with 1 button art. 3268I/1, 1 flush-mounted box art. 3160/1, 1 frame complete with finishing frame art. 3161/1, 1 power supply unit art. 1595 and 1 PC Intercom software art. 1454K. The kit is pre-programmed and ready to use. The kit can be expanded with other products from the VIP catalogue.

### ACCESSORIES



4894HIM

#### EXTERNAL UNIT FOR VIP KIT - IKALL METAL H264

Single-family video door entry external unit for ViP system with Ikall Metal entrance panel. The kit comprises: 1 flush-mounted box Art. 3110/1, 1 silver coloured frame Art. 3311/1S, 1 module with 1 button art. 33411M and 1 colour audio/video unit Art. 4682HKC. The external unit is coded with ViP address 100 and the button on module Art. 33411M sends the call to ViP address 1. Compatible with H264 video format.



4682HKC

#### COLOUR A/V UNIT FOR VIP SYSTEM, IKALL SERIES. H264

ViP KIT system audio-video unit with terminal block, complete with mini lens colour camera which is adjustable from the front and LED camera lighting. Complete with terminal block and digital audio management system with Echo-cancelling, watertight loudspeaker and electret microphone, loudspeaker volume adjustable from the front. Dimensions: 102x55x38 mm. Compatible with H.264 video format





## INTERNAL UNITS



## EASYCOM



6203B

**EASYCOM VIP UNIT - BLACK**

Full duplex hands-free intercom with electronic calling, call volume adjustment, privacy, loud speaker volume adjustment and privacy of conversation. Fitted as standard with audio activation push button with active audio LED signalling, door lock command and 6 configurable buttons. White colour. Dimensions: 90 x 160 x 28 mm



6203W

**EASYCOM VIP UNIT - WHITE**

Full duplex hands-free intercom with electronic calling, call volume adjustment, privacy, loud speaker volume adjustment and privacy of conversation. Fitted as standard with audio activation push button with active audio LED signalling, door lock command and 6 configurable buttons. White colour. Dimensions: 90 x 160 x 28 mm



## PRODUCT CATALOGUE

### INTERNAL UNITS

#### STYLE

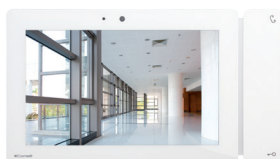


2633

##### EASYCOM VIP UNIT - WHITE

Full duplex hands-free intercom with electronic calling, call volume adjustment, privacy, loud speaker volume adjustment and privacy of conversation. Fitted as standard with audio activation push button with active audio LED signalling, door lock command and 6 configurable buttons. White colour. Dimensions: 90 x 160 x 28 mm

#### MAXI



6802W

##### MAXI SERIES 7" MONITOR, VIP SYSTEM

7" 16:9 touch monitor with full-duplex hands-free audio. Management of Audio distribution and Energy consumption as standard. Audio, ringtone, colour and contrast adjustment. Equipped with a slot to house the micro SD Card. Ringtone can be customised. Equipped with video memory function and internal directory for the management of intercom calls. Management of external floor door call and call repetition as standard. Panic and alarm input. "Sensitive touch" commands with LED backlighting. The audio and door-opening command is always visible, whilst the others appear after touch or swipe contact. Also has button for self-ignition, selectable privacy or doctor button (with red privacy active indicator), and 2 buttons for different uses. "Door Open" and "New Message" indicator lights. Flush or wall-mounted or desk base versions. 223x124x25 mm. Compatible with H264 video format.



6812

##### DESK BASE FOR MAXI MONITOR

Desk base for desktop conversion of Handsfree Mini monitor. Complete with 1x 2 metre cable with RJ45 connector to connect monitor terminals to the coupler or domestic series socket. Dimensions: 140x190x140mm.



6817

##### FLUSH-MOUNTED BOX FOR MAXI MONITOR

Flush-mounted box in black ABS. Dimensions: 212x115x50mm



6820

##### SBC & VIP MAXI MONITOR WALL SUPPORT

Wall support for Maxi monitor. White. Dimensions: 216x117x16 mm.



## INTERNAL UNITS

## ICONA



6602W

**ICONA SERIES HANDS-FREE COLOUR MONITOR. VIP SYSTEM. H264**

Flush-mounted (on box Art. 6117) or surface-mounted (with bracket Art. 6620) colour monitor with 4.3" 16/9 touch screen and hands-free full-duplex audio. Allows adjustment of backlighting intensity, contrast, audio volume and ringtone volume. Equipped as standard with sensitive touch controls for lock-release, audio activation, self-ignition, privacy service and 3 other controls for programmable functions, and door open and new message indicator LEDs. Standard floor door call and call repetition management, with alarm and panic inputs and micro SD Card slot. You can customise the ringtone and video memory function with an absent message. Can also be used on standard POE systems. Dimensions 142.5x147x23mm. Compatible with H.264 video format.



6117

**PLANUX, SMART, ICONA FLUSH BACKBOX**

Flush mounted box for Planux, Smart and Icona monitors Dimensions: 132x132x50mm



6612

**WALL BRACKET FOR ICONA MONITOR**

Wall bracket for Icona monitor. Colour: White. Dimensions: 137X142X12.5 mm.



6620

**WANDSTEUN VOOR ICONA MONITOR**

Wandsteun voor Icona-monitor. Kleur wit. Afmetingen: 137x142x12,5mm.



6118

**PLANUX CLIPS FOR DRY LINED WALLS**

Installation kit for plasterboard walls.



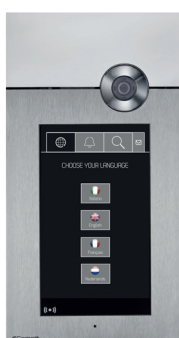


## PRODUCT CATALOGUE

### EXTERNAL UNITS



#### 30NE6 TOUCH



3454H

##### VIP 316 TOUCH A/V ENTRANCE PANEL. H264

Stainless steel flush-mounted entrance panel (fitted level with the wall) with 8" capacitive touch screen featuring high visibility and impact-proof glass. Certified as IK08. Operation with configurable graphics (list of names with search, virtual static buttons up to 10 users, alphabetised directory, number code up to 8 digits). Allows customisation of the virtual buttons and viewing of general apartment block messages. Fully configurable via ViP Manager; language, brightness and name/code adjustment can also be carried out locally. Fitted with rfid reader for local door lock control, an additional relay for various uses and proximity and brightness sensors for optimal operational management. Complete with ViP a/v unit Art. 4682HC for audio/video/door lock management and flush-mounted box. To be powered at 33 Vdc using Art. 1596. Dimensions 342x182x3 mm. Compatible with H.264 video format



1596A

##### POWER SUPPLY UNIT 33 VDC 60W INPUT 110-240 VAC 316 ENTR. PAN

Power supply unit with 110-230V primary and 33Vdc 1.8A continuous output for 316 range entrance panels. Equipped with internal protection against current overload and short circuits. Dimensions: 71.7x90x62 mm (4 DIN modules).



## EXTERNAL UNITS

## 3ONE6 SENSE



3452

**DIGITAL CAP SENS STAINLESS STEEL A/V ENTRANCE PANEL – VIP**

Flush-mounted entrance panel with 3 mm thick stainless steel plate. Complete with 128x64 dot LCD graphic display and 15 buttons integrated into the plate, with no mechanical movement. Also works as access control keypad. Two search buttons are used to scroll through the names; alternatively, the first letter of the required name can be entered. Once the desired username is displayed, simply press the call button. The call can also be made by directly entering the user code. It can also be used to customise an initial welcome message and can operate with a dual user interface language. Integrated RFID reader which can be used in conjunction with Simplekey. Complete with VIP a/v unit part. 4682HC for audio/video/door lock management, and flush-mounted box with concealed fixing screws. Dimensions 342x182x3 mm. IK08 certified.



3459

**RAINSHIELD WITH LEDS FOR 316 SENSE ST. STEEL ENT. PANEL**

Rain shield for 316 series panels.

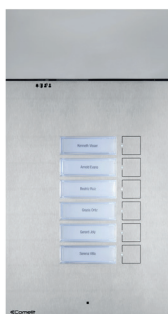


1595

**33VDC POWER SUPPLY UNIT FOR IKALL ENTRANCE PANEL**

Power supply unit 110-230V input and 33Vdc 500 mA continuous output, and 1.2A inrush current for external unit with IKALL entrance panel. Equipped with internal protection against overcurrent and short circuits. Dimensions: 71.7x90x62 mm (4 DIN modules).

## 3ONE6 ANALOG

**3ONE6 ANALOG AUDIO PANEL VIP**

Flush-mounted entrance panel with 3 mm thick stainless steel plate; buttons integrated into the plate, with no mechanical movement. Name card holders with LED lighting and front access for name replacement. Complete with VIP audio unit part. 1682 for audio/door lock management, and flush-mounted box with concealed fixing screws. To be powered at 33 Vdc using part. 1595. IK08 certified.

Code	N. Buttons	Dimensions
3201XA	1	247x182x3 mm
3202XA	2	247x182x3 mm
3203XA	3	293x182x3 mm
3204XA	4	293x182x3 mm
3205XA	5	342x182x3 mm
3206XA	6	342x182x3 mm
3207XA	7	408x182x3 mm
3208XA	8	408x182x3 mm
3209XA	9	408x182x3 mm
3210XA	10	477x182x3 mm
3211XA	11	477x182x3 mm
3212XA	12	477x182x3 mm



## PRODUCT CATALOGUE

### EXTERNAL UNITS



#### 30NE6 ANALOG A/V PANEL VIP H264

Flush-mounted entrance panel (fitted level with the wall) and plate in 3mm thick stainless steel; buttons integrated into the plate, with no mechanical movement. IK08 certification. Nameplates with LED lighting and front access for name replacement. Allows management of visual call, conversation and door lock status indications. Complete with a/v VIP unit Art. 4682HC for audio/video/door lock management, and flush-mounted box with concealed fixing screws. For powering at 33Vdc with Art. 1595.

Code	N. Buttons	Dimensions
3201HXV	1	247x182x3 mm
3202HXV	2	247x182x3 mm
3203HXV	3	293x182x3 mm
3204HXV	4	293x182x3 mm
3205HXV	5	342x182x3 mm
3206HXV	6	342x182x3 mm
3207HXV	7	408x182x3 mm
3208HXV	8	408x182x3 mm
3209HXV	9	408x182x3 mm
3210HXV	10	477x182x3 mm
3211HXV	11	477x182x3 mm
3212HXV	12	477x182x3 mm

### ACCESSOIRES 30NE6



3458

#### ACCESS CONTROL ACCESSORY MODULE FOR EXTERNAL UNITS, 30NE6

Flush-mounted 3 mm thick stainless steel plate for housing the access control module. Can be used in conjunction with all entrance panels in the 316 range. Dimensions 88x182x3 mm



#### FLUSH-MOUNTED BOX ENT.PANELS. 30NE6 SERIES

Flush-mounted box for 1- and 2-button ent. panels from 316 Analog series. Dimensions: 164x227,5x56 mm

Artikelnr.	Aant. toetsen	Afmetingen
3460/2	1 - 2	164x227,5x56 mm
3460/4	3 - 4	164x273,5x56 mm
3460/6	5 - 6	164x323x56 mm
3460/9	7 - 8 - 9	164x388,5x56 mm
3460/12	10 - 11 - 12	164x457,5x56 mm

3462/2

#### WALL-MOUNTED HOUSING SERIES 316 1 & 2 BUT. PANEL

Stainless steel accessory for wall-mounted 316 series entrance panels with 1 or 2 buttons. Dimensions 180x245x57 mm

3462/4

#### WALL-MOUNTED HOUSING SERIES 316 3 & 4 BUT. PANEL

Stainless steel accessory for wall-mounted 316 series entrance panels with 3 or 4 buttons. Dimensions 180x290x57 mm

3462/6

#### WALL HOUSING FOR TOUCH-SENSE & 5-6 BUTT.ENT.PAN. 316 SERIES

Stainless steel accessory for wall-mounted entrance panels Art. 3451, 3451/A, 3452, 3453, 3454. Dimensions 180x340x57 mm





## EXTERNAL UNITS

### ARCHITECTUS PRO



3472

#### SENSE MODULE VIP SYSTEM ARCHITECTUS-PRO

Flush-mounted entrance panel with 3 mm thick stainless steel plate. Complete with 128x64 dot LCD graphic display and 15 buttons integrated into the plate, with no mechanical movement. Also works as access control keypad. Two search buttons are used to scroll through the names; alternatively, the first letter of the required name can be entered. Once the desired username is displayed, simply press the call button. The call can also be made by directly entering the user code. It can also be used to customise an initial welcome message and can operate with a dual user interface language. Integrated RFID reader which can be used in conjunction with Simplekey. Complete with VIP a/v unit part. 4682C for audio/video/door lock management, and flush-mounted box with concealed fixing screws. Dimensions 342x182x3 mm. IK08 certified.



3474

#### TOUCH MODULE VIP SYSTEM ARCHITECTUS-PRO

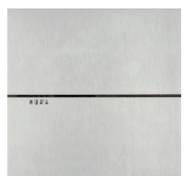
Stainless steel flush-mounted entrance panel with 7" capacitive touch screen with impact-proof glass. IK08 certified. Configurable graphics (list of names with search, up to 60 virtual buttons (or 10 with images, name directory, access codes up to 8 digits). Integrated RFID reader which can be used in conjunction with Simplekey. Users and settings are simple to program using VIP Manager part. 1449. It is compatible with all VIP products and functions. Pre-assembled with VIP a/v unit part. 4682C for audio/video/door lock management, and flush-mounted box with concealed fixing screws. Dimensions 342x182x3 mm.



3476

#### MODULE A/V VIP SYSTEM ARCHITECTUS-PRO

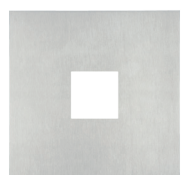
Flush-mounted audio/video module (fitted level with the wall) and 3 mm thick stainless steel plate. Complete with Art. 4682C for audio/video/door lock management. Allows management of visual call, conversation and door lock status indications. Dimensions 184x184x3 mm



3478

#### MODULE AUDIO VIP SYSTEM ARCHITECTUS-PRO

Flush-mounted audio module (fitted level with the wall) and 3 mm thick stainless steel plate. Complete with Art. 1682 for audio/door lock management. Allows management of visual call, conversation and door lock status indications. Dimensions 184x184x3 mm



3479

#### MODULE FOR SIMPLEKEY READER ARCHITECTUS-PRO

Flush-mounted module (fitted level with the wall) and 3 mm thick stainless steel plate for access control module housing. Dimensions 184x184x3 mm



3481

#### MODULE 1 BUTTON SB/VIP BLANK NAMEPLATE ARCHITECTUS-PRO

Flush-mounted button module (fitted level with the wall) and 3 mm thick stainless steel plate; buttons integrated into the plate, with no mechanical movement. Name card holders with LED lighting and front access for name replacement. Dimensions 184x184x3 mm

3482

#### MODULE 1 BUTTON SB/VIP BLANK NAMEPLATE ARCHITECTUS-PRO

Flush-mounted button module (fitted level with the wall) and 3 mm thick stainless steel plate; buttons integrated into the plate, with no mechanical movement. Name card holders with LED lighting and front access for name replacement. Dimensions 184x184x3 mm



## PRODUCT CATALOGUE

### EXTERNAL UNITS



3483

#### MODULE 3 BUTTON SB/VIP BLANK NAMEPLATE ARCHITECTUS-PRO

Flush-mounted button module (fitted level with the wall) and 3 mm thick stainless steel plate; buttons integrated into the plate, with no mechanical movement. Name card holders with LED lighting and front access for name replacement. Dimensions 184x184x3 mm



3489

#### CUSTOMISED NAMEPLATE ARCHITECTUS-PRO

Customised engraved stainless steel nameplate. Available on request

### VANDALCOM



3159

#### VANDALCOM SERIES STAINLESS STEEL SURFACE-MOUNTED HOUSING

Modules	Code	Dimensions
3159/1	1	142x142x58mm
3159/2	2	142x254x58mm
3159/3	3	142x366x58mm



3160

#### FLUSH-MOUNTED BOX FOR VANDALCOM ENTRANCE PANEL

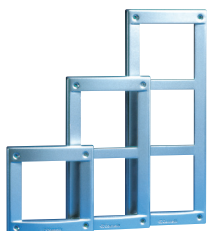
Modules	Code	Dimensions
3160/1	1	130x130x58mm
3160/2	2	130x242x58mm
3160/3	3	130x354x58mm



3161

#### VANDALCOM SERIES FRAME. DARK GREY COLOUR

Modules	Code	Dimensions
3161/1	1	143x143x18mm
3161/2	2	143x255x18mm
3161/3	3	143x367x18mm



3161/A

#### VANDALCOM SERIES FRAME. STEEL GREY COLOUR

Modules	Code	Dimensions
3161/1A	1	143x143x18mm
3161/2A	2	143x255x18mm
3161/3A	3	143x367x18mm

## EXTERNAL UNITS



3262S	<b>MODULE FOR AUDIO UNITS</b>		
	Module made using double 2.5 mm 316 stainless steel plate. For use with audio unit depending on the wiring system used.		
	Modules	Code	Dimensions
	3262S/0	0	106x106x44mm
	3262S/1	1	106x106x44mm
	3262S/2	2	106x106x44mm



3268S	<b>MODULE FOR A/V UNITS</b>		
	Module made using double 2.5 mm 316 stainless steel plate. For use with audio/video unit depending on the wiring system used.		
	Modules	Code	Dimensions
	3268S/0	0	106x106x44mm
	3268S/1	1	106x106x44mm
	3268S/2	2	106x106x44mm



3064S	<b>4-BUTTON MODULE, VANDALCOM SERIES</b>		
	Module made using double 2.5 mm 316 stainless steel plate. 4-button module. Dimensions 106x106x30 mm		



3070S	<b>DIGITAL CALL MODULE, VANDALCOM SERIES</b>		
	Module made using double 2.5 mm 316 stainless steel plate, complete with keypad featuring 12 backlit buttons and 16-digit alphanumeric display showing call codes and user interaction messages (busy, etc.). Also functions as an electronic key code with 1000 possible different 6-digit command codes. Dimensions: 106x106x56 mm.		



3072S	<b>DIGITAL DIRECTORY MODULE, VANDALCOM SERIES</b>		
	Module made using double 2.5 mm 316 stainless steel plate, complete with 4 backlit buttons and 32-digit alphanumeric display. Stores up to 1000 user names. Scroll through names using 2 search buttons. Once the name is displayed, simply press the call button. Dimensions: 106x106x56 mm.		



3176S	<b>STEEL BLANK MODULE, VANDALCOM SERIES</b>		
	Made using double 2.5 mm stainless steel plate. Dimensions: 106x106x9 mm		



3179S	<b>MODULE FOR SIMPLEKEY READER, VANDALCOM SERIES</b>		
	Module made using double 2.5 mm 316 stainless steel plate, with facility for housing SimpleKey units SK9000I-SK9001I-SK9030I. Dimensions: 106x106x9 mm		



3186S	<b>INDICATION/NAMEPLATE MODULE, VANDALCOM SERIES</b>		
	Module made using double 2.5 mm 316 stainless steel plate. Complete with white label for general information (house no., etc.) and pre-printed label with space for 12 user names. Dimensions: 106x106x9 mm.		



3188S	<b>VANDALCOM ELECTRONIC KEY FOR PW AND IKALL UNITS</b>		
	Module made using double 2.5 mm 316 stainless steel plate. Complete with backlit keypad. Features 300 different 8-digit codes that can be programmed from the keypad to control two relays (10A), as well as a confirm request buzzer and relay activation LED. Relay closure time can be set from the keypad. Dimensions: 106x106x56 mm.		





## PRODUCT CATALOGUE

### EXTERNAL UNITS



SK9001I

#### SIMPLEKEY ADVANCED READER IKALL

Simplekey Advanced access control unit, complete with Mifare proximity reader + control unit. Hermetic PVC case to be fitted to various entrance panels. Capacity:1500 keys. System programming through USB Encoder and Simplekey Advanced SK9091 software. LED for system status indication. Recording of the previous 1,400 events. Option to create complex building systems without the need for a physical connection. Relay closing timer: from 1 to 60 seconds, 5 second default. 12-24 V DC/AC or 33V DC power supply unit from part. 1595.



1172B

#### LED BULB FOR EXTERNAL UNITS

LED bulb for nameplate lighting.



1682

#### IKALL VIP AUDIO ONLY SPEAKER

Audio-video unit for ViP system including terminal block complete with front-adjustable mini lens colour camera, LED camera lighting. Complete with terminal block and digital audio management system with Echo-cancelling, watertight loudspeaker and electret microphone, loudspeaker volume adjustable from the front. For fitting in modules: part. 33410, 33411 and 33412. Dimensions: 102x55x38 mm.

1682HVC

#### IKALL SERIES AUDIO MOD. FOR REM.COL.CAM. VIP. H264

ViP system audio unit with facility for connection of a remote camera with 12Vdc power supply. Complete with terminal block and digital audio management system with Echo-cancelling, watertight loudspeaker and electret microphone, loudspeaker volume adjustable from the front. Dimensions: 102x55x38 mm. Compatible with H.264 video format.



4682HC

#### COL.AUD/VID UNIT FOR VIP SYST., IKALL SERIES.H264

Audio-video unit for ViP system including terminal block complete with front-adjustable mini lens colour camera, LED camera lighting. Complete with terminal block and digital audio management system with Echo-cancelling, watertight loudspeaker and electret microphone, loudspeaker volume adjustable from the front. For fitting in modules: part. 33410, 33411 and 33412. Dimensions: 102x55x38 mm.

4682HCW

#### D&N WIDE COL.A/V UNIT. VIP SYS. IKALL SERIES. H264

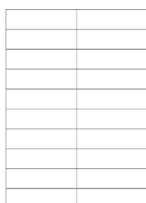
Audio-video unit for ViP system including terminal block complete with front-adjustable mini lens colour camera, LED camera lighting. Complete with terminal block and digital audio management system with Echo-cancelling, watertight loudspeaker and electret microphone, loudspeaker volume adjustable from the front. For fitting in modules: part. 33410, 33411 and 33412. Dimensions: 102x55x38 mm.



1595

#### 33VDC POWER SUPPLY UNIT FOR IKALL ENTRANCE PANEL

Power supply unit 110-230V input and 33Vdc 500 mA continuous output, and 1.2A inrush current for external unit with IKALL entrance panel. Equipped with internal protection against overcurrent and short circuits. Dimensions: 71.7x90x62 mm (4 DIN modules).



1219

#### NAME TAG SHEETS FOR VANDALCOM ENTRANCE PANEL

The kit contains 10 sheets of adhesive labels for nameplates, 7 sheets for information modules.



## EXTERNAL UNITS

## IKALL METAL



## MODULE FLUSH MOUNT BACK BOX

	Modules	Code	Dimensions
3110	3110/1	1	118x118x45mm
	3110/2	2	118x207x45mm
	3110/3	3	118x297x45mm
	3110/4	4	118x387x45mm



## MODULE-HOLDER FRAME COMPLETE WITH FINISHING CORNICE

	Modules	White	Anthracite	Silver	Dimensions
3311	1	3311/1W	3311/1A	3311/1S	125x125x37,5mm
	2	3311/2W	3311/2A	3311/2S	125x215x37,5mm
	3	3311/3W	3311/3A	3311/3S	125x305x37,5mm
	4	3311/4W	3311/4A	3311/4S	125x395x37,5mm

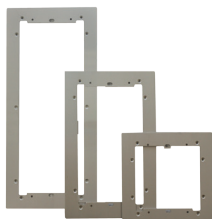


## RAIN SHIELD FOR ENTRANCE PANEL

Natural anodised aluminum rain shield Ikall panel

Modules	Code	Dimensions
31121	1	154x152x44mm
31122	2	154x242x44mm
31123	3	154x332x44mm
31124L	4L*	154x422x44mm

\*4 vertically-aligned modules



## IKALL NATURAL ANODISED ALUMINIUM FINISHING FRAME

Artikelnr.	Modules	Afmetingen
31141	1	149x149x3mm
31142	2	149x239x3mm
31143	3	149x329x3mm
31144L	4L*	419x419x3mm

\*4 vertically-aligned modules



## IKALL NATURAL ANODISED ALUMINIUM HOUSING WITH RAIN SHIELD.

Modules	Code	Dimensions
31161	1	154x152x85mm
31162	2	154x242x85mm
31163	3	154x332x85mm
31164L	4L*	154x422x85mm

\*4 vertically-aligned modules



## PRODUCT CATALOGUE

### EXTERNAL UNITS



3639	<b>PILLAR FOR ENTRANCE PANEL, HEIGHT 170 CM</b> Extruded aluminium pillar with steel coloured finish, aluminium rain shield and floor-mounted base, bolts provided.		
	Code	Modules	Dimensions
	3639/1	1	18x170x7,5cm
	3639/2	2	18x170x7,5cm
	3639/3	3	18x170x7,5cm



3640	<b>PILLAR FOR ENTRANCE PANEL, HEIGHT 117 CM</b> Extruded aluminium pillar with steel coloured finish, aluminium rain shield and floor-mounted base, bolts provided.		
	Code	Modules	Dimensions
	3640/1	1	18x117x7,5cm
	3640/2	2	18x117x7,5cm
	3640/3	3	18x117x7,5cm



3649	<b>1 MODULE 45° ANGLED ENTRANCE PANEL HOUSING</b> Aluminium housing which allows entrance panels to be installed at 45°. Once fitted to the wall, the housing angles the entrance panel laterally towards the user for easier and practical use.		
	Code	Modules	Dimensions
	3649/1	1	183x130x100mm
	3649/2	2	183x242x100mm
	3649/3	3	183x354x100mm



33400M	<b>IKALL METAL AUDIO MODULE - 0 BUTTONS</b> Module designed for audio speaker unit, with stainless steel finish. To be fitted with an audio speaker unit depending on the cabling system used. Dimensions 112x89.5x32 mm.		
--------	--	--	--



33401M	<b>IKALL METAL AUDIO MODULE - 1 BUTTON</b> Module designed for audio speaker unit, with stainless steel finish. Nameplates with LED lighting (options: blue, white or off). To be fitted with an audio speaker unit depending on the cabling system used. Dimensions 112x89.5x32 mm.		
--------	---	--	--



33402M	<b>IKALL METAL AUDIO MODULE - 2 BUTTONS</b> Module designed for audio speaker unit, with stainless steel finish. Nameplates with LED lighting (options: blue, white or off). To be fitted with an audio speaker unit depending on the cabling system used. Dimensions 112x89.5x32 mm.		
--------	--	--	--



33410M	<b>IKALL METAL VIDEO MODULE - 0 BUTTONS</b> Audio/video module with stainless steel finish. Combine with matching Audio/Video module, depending on applied cabling. Dimensions 112x89, 5x32 mm.		
--------	--	--	--



33411M	<b>IKALL METAL VIDEO MODULE - 1 BUTTON</b> Audio/video module with stainless steel finish. Name plate with LED backlight, a choice of blue, white or off. Combine with matching Audio/Video module, depending on applied cabling. Dimensions 112x89, 5x32 mm.		
--------	--	--	--



33412M	<b>IKALL METAL VIDEO MODULE - 2 BUTTONS</b> Audio/video module with stainless steel finish. Name plate with LED backlight, a choice of blue, white or off. Combine with matching Audio/Video module, depending on applied cabling. Dimensions 112x89, 5x32 mm.		
--------	---	--	--

33433M	<b>IKALL METAL SB2 3 BUTTON MODULE</b> IKALL entrance panel 3-button module for Simplebus and VIP systems, with stainless steel finish. Nameplate lighting options: blue/white/off. Dimensions 112x89.5x40 mm.		
--------	---	--	--





## EXTERNAL UNITS



33434M

### IKALL METAL SB2 4 BUTTON MODULE

IKALL entrance panel 4-button module for Simplebus and VIP systems, with stainless steel finish. Nameplate lighting options: blue/white/off. Dimensions 112x89.5x40 mm.



33436M

### IKALL METAL SB2 6 BUTTON MODULE

IKALL entrance panel 6-button module for Simplebus and VIP systems, with stainless steel finish. Nameplate lighting options: blue/white/off. Dimensions 112x89.5x40 mm.



3334M

### IKALL METAL BLANK MODULE

Blank module with stainless steel finish. Dimensions 112x89.5x22 mm.



3336M

### IKALL METAL INDICATOR MODULE

LED-backlit module providing various indications, with stainless steel finish. Nameplate lighting options: blue/white/off. Dimensions 112x89.5x39.



3339M

### IKALL METAL NAME PLATE

LED-backlit module displaying a list of names or user codes (max. 12). Stainless steel finish; blue/white/off nameplate lighting options. Dimensions 112x89.5x39.



3348M

### IKALL METAL CODED ACCESS MODULE

Digital electronic key module with LED keypad backlighting. Blue, white and off lighting options; stainless steel finish. When a number with between 1 and 8 digits is entered on the keypad, two relays (10A) are activated, allowing electric door locks or other devices to be operated. 12 V AC/DC power supply. Dimensions 112x89.5x40 mm.



3349M

### IKALL METAL SIMPLEKEY CUT-OUT

Module set up for use with Simplekey reader Art. SK9000I. Stainless steel finish. Dimensions 112x89.5x22 mm



3360BM

### 2-WIRE AND VIP CALL MODULE. IKALL METAL

Digital call module with 128x64 dot graphic LCD display and keypad with 21 buttons backlit with blue LEDs. Also functions as an electronic key code. Two search buttons are used to scroll through the names; alternatively, the first letter of the required name can be entered. Once the desired username is displayed, simply press the call button. The call can also be made by directly entering the user code. It can also be used to customise an initial welcome message and can operate with a dual user interface language. It can be used in conjunction with Simplekey electronic keys for automatic updating of names in the directory. For the SBC system (factory setting), the electronic name directory saves up to 3500 user names and 6000 lock-release passwords. Users and settings are simple to program using PC software art. 1249B (included, with USB connection cable) via a USB or RS485 port, or locally on the digital module itself. Includes the CD-ROM loaded with serial download SW art. 1249B for installation to PC and the USB connection cable. Dimensions: 112x180x40



1682

### IKALL VIP AUDIO ONLY SPEAKER

Audio-video unit for VIP system including terminal block complete with front-adjustable mini lens colour camera, LED camera lighting. Complete with terminal block and digital audio management system with Echo-cancelling, watertight loudspeaker and electret microphone, loudspeaker volume adjustable from the front. For fitting in modules: part. 33410, 33411 and 33412. Dimensions: 102x55x38 mm.

1682HVC

### IKALL SERIES AUDIO MOD. FOR REM.COL.CAM. VIP. H264

VIP system audio unit with facility for connection of a remote camera with 12Vdc power supply. Complete with terminal block and digital audio management system with Echo-cancelling, watertight loudspeaker and electret microphone, loudspeaker volume adjustable from the front. Dimensions: 102x55x38 mm. Compatible with H.264 video format.



## PRODUCT CATALOGUE

### EXTERNAL UNITS



4682HC

#### COL.AUD/VID UNIT FOR VIP SYST., IKALL SERIES.H264

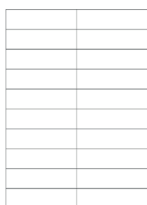
Audio-video unit for ViP system including terminal block complete with front-adjustable mini lens colour camera, LED camera lighting. Complete with terminal block and digital audio management system with Echo-cancelling, watertight loudspeaker and electret microphone, loudspeaker volume adjustable from the front. For fitting in modules: part. 33410, 33411 and 33412. Dimensions: 102x55x38 mm.



4682HCW

#### D&N WIDE COL.AV UNIT. VIP SYS. IKALL SERIES. H264

Audio-video unit for ViP system including terminal block complete with front-adjustable mini lens colour camera, LED camera lighting. Complete with terminal block and digital audio management system with Echo-cancelling, watertight loudspeaker and electret microphone, loudspeaker volume adjustable from the front. For fitting in modules: part. 33410, 33411 and 33412. Dimensions: 102x55x38 mm



1595

#### 33VDC POWER SUPPLY UNIT FOR IKALL ENTRANCE PANEL

Power supply unit 110-230V input and 33Vdc 500 mA continuous output, and 1.2A inrush current for external unit with IKALL entrance panel. Equipped with internal protection against overcurrent and short circuits. Dimensions: 71.7x90x62 mm (4 DIN modules).

1218

#### NAME TAG SHEETS FOR IKALL ENTRANCE PANEL

The kit contains 20 sheets of adhesive labels for single nameplates, 7 sheets for double nameplates and 1 sheet for information modules.

## IKALL



3110

#### INBOUWDOOS VOOR DEURSTATION

Modules	Code	Dimensions
3110/1	1	118x118x45mm
3110/2	2	118x207x45mm
3110/3	3	118x297x45mm
3110/4	4	118x387x45mm



3311

#### MODULE-HOLDER FRAME COMPLETE WITH FINISHING CORNICE

Modules	White	Anthracite	Silver	Dimensions
1	3311/1W	3311/1A	3311/1S	125x125x37,5mm
2	3311/2W	3311/2A	3311/2S	125x215x37,5mm
3	3311/3W	3311/3A	3311/3S	125x305x37,5mm
4	3311/4W	3311/4A	3311/4S	125x395x37,5mm



3311/AL

#### ANODIZES ALUMINIUM FRAME

Anodized aluminum frame ideal for installation in extreme situations such as the marine environment.

Modules	Code	Dimensions
3311/1AL	1	125x125x37,5mm
3311/2AL	2	125x215x37,5mm
3311/3AL	3	125x305x37,5mm
3311/4AL	4	125x395x37,5mm



## EXTERNAL UNITS

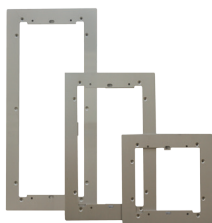


### RAIN SHIELD FOR ENTRANCE PANEL

Natural anodised aluminum rain shield Ikall panel

Modules	Code	Dimensions
31121	1	154x152x44mm
31122	2	154x242x44mm
31123	3	154x332x44mm
31124L	4L*	154x422x44mm

\*4 vertically-aligned modules



### IKALL NATURAL ANODISED ALUMINIUM FINISHING FRAME

Modules	Code	Dimensions
31141	1	149x149x3mm
31142	2	149x239x3mm
31143	3	149x329x3mm
31144L	4L*	419x419x3mm

\*4 vertically-aligned modules



### IKALL NATURAL ANODISED ALUMINIUM HOUSING WITH RAIN SHIELD

Modules	Code	Dimensions
31161	1	154x152x85mm
31162	2	154x242x85mm
31163	3	154x332x85mm
31164L	4L*	154x422x85mm

\*4 vertically-aligned modules



### PILLAR FOR ENTRANCE PANEL, HEIGHT 170 CM

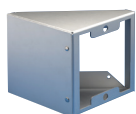
Extruded aluminium pillar with steel coloured finish, aluminium rain shield and floor-mounted base, bolts provided.

3639	Modules	Code	Dimensions
	3639/1	1	18x170x7,5cm
	3639/2	2	18x170x7,5cm
	3639/3	3	18x170x7,5cm

### PILLAR FOR ENTRANCE PANEL, HEIGHT 117 CM

Extruded aluminium pillar with steel coloured finish, aluminium rain shield and floor-mounted base, bolts provided.

3640	Modules	Code	Dimensions
	3640/1	1	18x117x7,5cm
	3640/2	2	18x117x7,5cm
	3640/3	3	18x117x7,5cm



### 1 MODULE 45° ANGLED ENTRANCE PANEL HOUSING

Aluminium housing which allows entrance panels to be installed at 45°. Once fitted to the wall, the housing angles the entrance panel laterally towards the user for easier and practical use.

3649	Modules	Code	Dimensions
	3649/1	1	183x130x100mm
	3649/2	2	183x242x100mm
	3649/3	3	183x354x100mm



### ZERO-BUTTON AUDIO MODULE WITH BLACK FACEPLATE

Module designed for audio speaker unit, with black screen-printed faceplate. To be fitted with an audio speaker unit depending on the cabling system used. Dimensions 112x89.5x32 mm.

33400





## PRODUCT CATALOGUE

### EXTERNAL UNITS



33401

#### IKALL AUDIO MODULE - 1 BUTTON

Module designed for audio speaker unit, with black screen-printed faceplate. Nameplates with LED lighting (options: blue, white or off). To be fitted with an audio speaker unit depending on the cabling system used. Dimensions 112x89.5x32 mm.



33401A

#### IKALL SERIES 1-BUTTON MODULE FOR AUDIO UNIT - METAL

Module designed for audio speaker unit, with stainless steel finish faceplate. Nameplates with LED lighting (options: blue, white or off). To be fitted with an audio speaker unit depending on the cabling system used. Dimensions 112x89.5x32 mm.



33402

#### IKALL AUDIO MODULE - 2 BUTTONS

Module designed for audio speaker unit, with black screen-printed faceplate. Nameplates with LED lighting (options: blue, white or off). To be fitted with an audio speaker unit depending on the cabling system used. Dimensions 112x89.5x32 mm.



33402A

#### IKALL SERIES 2-BUTTON MODULE FOR AUDIO UNIT - METAL

Module designed for audio speaker unit, with stainless steel finish faceplate. Nameplates with LED lighting (options: blue, white or off). To be fitted with an audio speaker unit depending on the cabling system used. Dimensions 112x89.5x32 mm.



33410

#### IKALL VIDEO MODULE - 0 BUTTONS

Module designed for audio/video speaker unit, with black screen-printed faceplate. To be fitted with a suitable video entry speaker unit depending on the cabling system used. Dimensions 112x89.5x32 mm.



33411

#### IKALL VIDEO MODULE - 1 BUTTON

Module designed for audio/video speaker unit, with black screen-printed faceplate. Nameplates with LED lighting (options: blue, white or off). To be fitted with a suitable video entry speaker unit depending on the cabling system used. Dimensions 112x89.5x32 mm.



33411A

#### IKALL SERIES 1-BUTTON MODULE FOR AUDIO/VIDEO UNIT - METAL

Module designed for audio/video speaker unit, with stainless steel finish faceplate. Nameplates with LED lighting (options: blue, white or off). To be fitted with a suitable door entry speaker unit depending on the cabling system used. Dimensions 112x89.5x32 mm.



33412

#### IKALL VIDEO MODULE - 2 BUTTONS

Module designed for audio/video speaker unit, with black screen-printed faceplate. Nameplates with LED lighting (options: blue, white or off). To be fitted with a suitable video entry speaker unit depending on the cabling system used. Dimensions 112x89.5x32 mm.

EXTERNAL UNITS



**33412A** **IKALL SERIES 2-BUTTON MODULE FOR AUDIO/VIDEO UNIT - METAL**  
Module designed for audio/video speaker unit, with stainless steel finish faceplate. Nameplates with LED lighting (options: blue, white or off). To be fitted with a suitable door entry speaker unit depending on the cabling system used. Dimensions 112x89.5x32 mm.



**33433** **IKALL SIMPLEBUS 3 BUTTON MODULE**  
3-button IKALL entrance panel module for Simplebus system. Nameplate lighting options: blue/white/off. Dimensions 112x89.5x40 mm.



**33434** **IKALL SIMPLEBUS 4 BUTTON MODULE**  
4-button IKALL entrance panel module for Simplebus system. Nameplate lighting options: blue/white/off. Dimensions 112x89.5x40 mm.



**33436** **IKALL SIMPLEBUS 6 BUTTON MODULE**  
6-button IKALL entrance panel module for Simplebus system. Nameplate lighting options: blue/white/off. Dimensions 112x89.5x40 mm.



**3334** **PLAIN MODULE WITH BLACK FACEPLATE**  
Plain module with black faceplate. Dimensions 112x89.5x22 mm.



**3336** **LIT MODULE. IKALL SERIES. SB SYSTEM**  
LED backlight module for various indications. Nameplate lighting options: blue/white/off. Contains card for writing names and user codes (max. 12). Dimensions 112x89,5x39 mm).



**3348** **IKALL CODED ACCESS MODULE**  
Access control keypad with LED backlighting. Options: blue, white and off. When a number with between 1 and 8 digits is entered on the keypad, two relays (10A) are activated, allowing electric door locks or other devices to be operated. 12 V AC/DC power supply. Dimensions: 112x89,5x40 mm.



**3349** **IKALL SIMPLEKEY CUT-OUT**  
Module set up for use with Simplekey reader part. SK9000I, SK9001I and SK9030I. Dimensions 112x89,5x22 mm.



## PRODUCT CATALOGUE

### EXTERNAL UNITS



3360B

#### 2-WIRE AND VIP CALL MODULE. IKALL SERIES

Digital call module with 128x64 dot graphic LCD display and keypad with 21 buttons backlit with blue LEDs. Also functions as an electronic key code. Two search buttons are used to scroll through the names; alternatively, the first letter of the required name can be entered. Once the desired username is displayed, simply press the call button. The call can also be made by directly entering the user code. It can also be used to customise an initial welcome message and can operate with a dual user interface language. It can be used in conjunction with Simplekey electronic keys for automatic updating of names in the directory. For the SBC system (factory setting), the electronic name directory saves up to 3500 user names and 6000 lock-release passwords. Users and settings are simple to program using PC software art. 1249B (included, with USB connection cable) via a USB or RS485 port, or locally on the digital module itself. Includes the CD-ROM loaded with serial download SW art. 1249B for installation to PC and the USB connection cable. Dimensions: 112x180x40



1682

#### IKALL VIP AUDIO ONLY SPEAKER

Audio-video unit for VIP system including terminal block complete with front-adjustable mini lens colour camera, LED camera lighting. Complete with terminal block and digital audio management system with Echo-cancelling, watertight loudspeaker and electret microphone, loudspeaker volume adjustable from the front. For fitting in modules: part. 33410, 33411 and 33412. Dimensions: 102x55x38 mm.



1682HVC

#### IKALL SERIES AUDIO MOD. FOR REM.COL.CAM. VIP. H264

VIP system audio unit with facility for connection of a remote camera with 12Vdc power supply. Complete with terminal block and digital audio management system with Echo-cancelling, watertight loudspeaker and electret microphone, loudspeaker volume adjustable from the front. Dimensions: 102x55x38 mm. Compatible with H.264 video format.



4682HC

#### COL.AUD/VID UNIT FOR VIP SYST., IKALL SERIES. H264

Audio-video unit for VIP system including terminal block complete with front-adjustable mini lens colour camera, LED camera lighting. Complete with terminal block and digital audio management system with Echo-cancelling, watertight loudspeaker and electret microphone, loudspeaker volume adjustable from the front. For fitting in modules: part. 33410, 33411 and 33412. Dimensions: 102x55x38 mm.

4682HCW

#### D&N WIDE COL.A/V UNIT. VIP SYS. IKALL SERIES. H264

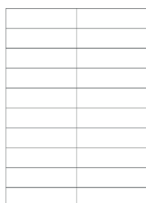
Audio-video unit for VIP system including terminal block complete with front-adjustable mini lens colour camera, LED camera lighting. Complete with terminal block and digital audio management system with Echo-cancelling, watertight loudspeaker and electret microphone, loudspeaker volume adjustable from the front. For fitting in modules: part. 33410, 33411 and 33412. Dimensions: 102x55x38 mm.



1595

#### 33VDC POWER SUPPLY UNIT FOR IKALL ENTRANCE PANEL

Power supply unit 110-230V input and 33Vdc 500 mA continuous output, and 1.2A inrush current for external unit with IKALL entrance panel. Equipped with internal protection against overcurrent and short circuits. Dimensions: 71.7x90x62 mm (4 DIN modules).



1218

#### NAME TAG SHEETS FOR IKALL ENTRANCE PANEL

The kit contains 20 sheets of adhesive labels for single nameplates, 7 sheets for double nameplates and 1 sheet for information modules.



EXTERNAL UNITS

EMERGENCY PANELS



3460EA

**AUDIO ENTRANCE PANEL FOR EMERGENCY CALLS. VIP SYSTEM**  
Stainless steel panel with a single call button and indicator LEDs for call forwarded and call answered. Complete with audio/video module Art. 4682C for ViP system and flush-mounted box. "EMERGENCY" model with Braille text. Can be wall-mounted using accessory Art. 3461. Dimensions 229x180x3 mm. IP54 certified.



3460HEV

**VIDEO ENT. PANEL FOR EMERGENCY CALLS. VIP SYSTEM. H264**  
Stainless steel entrance panel with a single call button and indicator LEDs for call forwarded and call answered. Complete with audio/video module Art. 4682C for ViP system and flush-mounted box. "EMERGENCY" model with Braille text. Can be wall-mounted using accessory Art. 3461. Dimensions 229x180x3 mm. Compatible with H.264 video format. IP54 certified.



3460HA

**AUDIO HELP POINT PUSHBUTTON ENTRANCE PANEL. VIP SYSTEM**  
Stainless steel panel with a single call button and indicator LEDs for call forwarded and call answered. Complete with audio module Art. 1682 for ViP system and flush-mounted box. "HELP POINT" model. Can be wall-mounted using accessory Art. 3461. Dimensions 229x180x3 mm. IP54 certified.



3460HHV

**VIDEO HELP POINT ENTRANCE PANEL. VIP SYSTEM H264**  
Stainless steel entrance panel with a single call button and indicator LEDs for call forwarded and call answered. Complete with audio/video module Art. 4682C for ViP system and flush-mounted box. "HELP POINT" model. Can be wall-mounted using accessory Art. 3461. Dimensions 229x180x3 mm. Compatible with H.264 video format. IP54 certified.



3461

**WALL HOUSING FOR EMERGENCY AND HELP POINT PANELS**  
Stainless steel accessory for wall-mounted entrance panels Art. 3460EA, 3460HEV, 3460HA, 3460HHV. Dimensions 176x227x57 mm

EASYCALL



4894E

**EASYCALL INTERNAL 1 BUTTON ENTRANCE PANEL FOR VIP SYSTEM**  
Internal entrance panel equipped with call button. Metal finish. Surface-mounted installation. Dimensions: 90x160x28 mm



## PRODUCT CATALOGUE

### ACCESSORIES

#### ACCESSORIES



1437

##### VIP SCAN PROTECTOR

Device protecting the ViP system. If the device is fitted in the system, it will be necessary to provide credentials in order to use the ViP Manager software. Observe the instructions given in the technical documentation during use and programming. RJ45 connector. Dimensions: 66x85x35 mm (4 DIN modules).



1439

##### SERVER/CLIENT BRIDGE FOR VIP SYSTEM

Allows interconnection of ViP devices and/or systems located at different sites. Can be configured as a Server or Client. The interconnection of two sites requires 2 devices: the first configured as a server and the second as a client. Possibility to work with or without VPN connection between sites. Comes equipped with a power supply unit.



1440

##### NETWORK SWITCH 4 PORT

PoE Ethernet switch with 2 ports (10/100 Mb) and 4 ports (10 MB). Dimensions 66 x 85 x 35 mm



1441

##### RISER POWER SUPPLY VIP 120W

230Vac/110Vac 100W power supply unit - 55Vdc with DIN bar (6 modules). Dimensions 99 x 93 x 53 mm



1441A

##### VIP SYSTEM 120W RISER POWER SUPPLY UNIT

230Vac/110Vac 120W power supply unit - 55Vdc with DIN bar (4 modules). Dimensions 65 x 125 x 107 mm



1441B

##### 30W VIP SYSTEM POWER SUPPLY UNIT

Power supply unit with 110Vac/240Vac input and 48Vdc output. 30W power. DIN bar power supply unit (4 DIN modules). Dimensions: 72x93x56mm



1443

##### VIP SYSTEM RELAY ACTUATOR MODULE

Intelligent device for commanding one 10A relay (local) for general use. RJ 45 connector Dimensions: 66 x 85 x 35 mm (4 DIN modules).



1445H

##### VIP SYSTEM REMOTE CAMERA MODULE H264

This module receives and sends the video signals received from 4 cameras. RJ 45 connector. Dimensions: 60x85x35mm (4 DIN modules). Compatible with H.264 video format



1446H

##### VIP SYSTEM PAL OR NTSC VIDEO OUTPUT MODULE H264

Module that generates system output video signal in PAL or NTSC format. RJ45 connector. Dimensions: 60x85x35mm (4 DIN modules). Compatible with H.264 video format.



1447

##### 10/100MB ACTIVE REPEATER MODULE VIP

10/100Mb active repeater module. Local power supply is not required. Up to 8 'cascaded' devices can be connected. 2 RJ45 ports. Dimensions: 60 x 85 x 35 mm (4 DIN modules).



1448

##### SWITCHBOARD SOFTWARE FOR PC FOR VIP SYSTEM

Software on USB micro-key for simple management and control of all the typical functions of the porter switchboard. In addition to the classic functions of ViP video door entry monitors, it receives and forwards audio/video calls and manages alarms in the apartments; it has a directory of actuators, internal and external units which, when programmed, easily identify the apartment and the external unit which made the call. It also has a recordings archive which stores all calls (made, managed, lost and forwarded) from internal/external units and alarms. It can also send messages to internal units. The software comes with a user license. To work correctly, the USB micro-key must always be inserted in the computer.



1449

##### RJ45 ETHERNET CABLE, 4-POLE CONNECTION. LENGTH 2M

RJ45 Ethernet cable, 4-pole connection, length 2 metres. For connecting switch 1440 to the PC.

## ACCESSORIES



1450

### VIP BARCODE READER FOR DEVICES

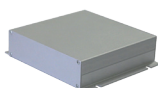
Bar code reader for scanning the MAC address of the device to be programmed onto the VIP system. Fitted with interface and USB cable for connection to a PC.



1451A

### POE POWER SUPPLY UNIT FOR VIP SYSTEM MONITOR

PoE Injector for one device



1452

### VIP REMOTE CONNECTION INTERFACE

The interface connected to the VIP system allows the system to be managed remotely with VIP manager software part. 1449 or Communications manager software part. 1449CM, via an Internet connection. A router with an Internet connection must be connected to the system.



1454

### PC INTERCOM

Software allowing for a PC or Mac to be used as a video intercom. To be installed and used on a PC or Mac connected to the system. Compatible from Snow Leopard version 10.6 or higher.

1454K

### LOCAL PC DOOR ENTRY MONITOR SOFTWARE VIP

Software on USB stick that allows a PC to be used for answering calls like a door entry monitor. Pre-set for operation with the single-family VIP KIT Art. 8501. For installation and use on a PC wired directly to the system.



1456

### MASTER APARTMENT GATEWAY

Apartment gateway in master version (does not require presence of door entry monitors). Allows the operation of door entry monitor system via tablets and smartphones using the Comelit VIP App, which can be downloaded free of charge. This function can be used locally via a Wi-Fi network or on portable devices using 3G (or higher) networks; automatic switching between Wi-Fi and 3G networks according to availability. In all cases, the gateway should be connected to an ASDL router or another device guaranteeing local Wi-Fi and mobile 3G connectivity. Depending on bandwidth limitations, the gateway can serve up to 15 appliances (including door entry monitors, smartphones, tablets and PCs) with 4 simultaneous audio/video streams. It also allows "intercom" communication between all of the 15 devices served. The gateway is equipped with 1 Ethernet port for ViP system riser input, 1 PoE port, 2 PoE ports (can be set to non-PoE) and 1 non-PoE port. It is also equipped with an input for the power supply. Dimensions: 70x90x62 mm (4 DIN modules).

1456B

### MULTI-APARTMENT GATEWAY FOR VIP SYSTEM

Interface allowing the connection of a private local area network to the ViP system. 1 port for connection to part. 1440 and 4 ports for connection to the VIP monitor, and other network devices on the private network. Dimensions 70x90x62 mm (4 DIN modules).



USB KEY LICENCE  
FOR 1456B

#### USB KEY LICENCE FOR 1456B

##### MASTER LICENCE

###### Code

1456B/M1	1 MASTER LICENCE FOR 1456B, VIP SYSTEM (USB KEY)
1456B/M10	10 MASTER LICENCES FOR 1456B, VIP SYSTEM (USB KEY)
1456B/M50	50 MASTER LICENCES FOR 1456B, VIP SYSTEM (USB KEY)
1456B/M100	100 MASTER LICENCES FOR 1456B, VIP SYSTEM (USB KEY)
1456B/M200	200 MASTER LICENCES FOR 1456B, VIP SYSTEM (USB KEY)

##### SLAVE LICENCE

###### Code

1456B/S1	1 SLAVE LICENCE FOR 1456B, VIP SYSTEM (USB-KEY)
1456B/S10	10 SLAVE LICENCES FOR 1456B, VIP SYSTEM (USB-KEY)
1456B/S50	50 SLAVE LICENCES FOR 1456B, VIP SYSTEM (USB-KEY)
1456B/S100	100 SLAVE LICENCES FOR 1456B, VIP SYSTEM (USB-KEY)
1456B/S200	200 SLAVE LICENCES FOR 1456B, VIP SYSTEM (USB-KEY)

##### PHONE LICENCE

###### Code

1456B/T1	1 PHONE LICENCE FOR 1456B, VIP SYSTEM (USB KEY)
1456B/T10	10 PHONE LICENCES FOR 1456B, VIP SYSTEM (USB KEY)
1456B/T50	50 PHONE LICENCES FOR 1456B, VIP SYSTEM (USB KEY)
1456B/T100	100 PHONE LICENCES FOR 1456B, VIP SYSTEM (USB KEY)
1456B/T200	200 PHONE LICENCES FOR 1456B, VIP SYSTEM (USB KEY)





## PRODUCT CATALOGUE

### ACCESSORIES



#### E-MAIL LICENCE FOR 1456B

##### E-MAIL LICENTIE VOOR 1456B

###### MASTER LICENCE

###### Code

1456B/ME1	1 MASTER LICENCE FOR 1456B, VIP SYSTEM (E-MAIL)
1456B/ME10	10 MASTER LICENCES FOR 1456B, VIP SYSTEM (E-MAIL)
1456B/ME50	50 MASTER LICENCES FOR 1456B, VIP SYSTEM (E-MAIL)
1456B/ME100	100 MASTER LICENCES FOR 1456B, VIP SYSTEM (E-MAIL)
1456B/ME200	200 MASTER LICENCES FOR 1456B, VIP SYSTEM (E-MAIL)

###### SLAVE LICENCE

###### Code

1456B/SE1	1 MASTER LICENCE FOR 1456B, VIP SYSTEM (E-MAIL)
1456B/SE10	10 MASTER LICENCES FOR 1456B, VIP SYSTEM (E-MAIL)
1456B/SE50	50 MASTER LICENCES FOR 1456B, VIP SYSTEM (E-MAIL)
1456B/SE100	100 MASTER LICENCES FOR 1456B, VIP SYSTEM (E-MAIL)
1456B/SE200	200 MASTER LICENCES FOR 1456B, VIP SYSTEM (E-MAIL)

###### PHONE LICENCE

###### Code

1456B/TE1	1 PHONE LICENCE FOR 1456B, VIP SYSTEM (E-MAIL)
1456B/TE10	10 PHONE LICENCES FOR 1456B, VIP SYSTEM (E-MAIL)
1456B/TE50	50 PHONE LICENCES FOR 1456B, VIP SYSTEM (E-MAIL)
1456B/TE100	100 PHONE LICENCES FOR 1456B, VIP SYSTEM (E-MAIL)
1456B/TE200	200 PHONE LICENCES FOR 1456B, VIP SYSTEM (E-MAIL)



1456G

#### THIRD PARTY HOME AUTOMATION INTERFACE

Interface allowing the connection of third party Home Automation devices. 1 port for connection to part. 1440 and 4 ports for connection to the VIP monitor, and other network devices on the private network. Dimensions 70x90x62 mm (4 DIN modules).



1456S

#### APARTMENT SLAVE GATEWAY FOR VIP SYSTEM

Apartment gateway in slave version (requires presence of a door entry monitor). Allows the operation of door entry monitor system via tablets and smartphones using the Comelit ViP App, which can be downloaded free of charge. This function can be used locally via a Wi-Fi network or on portable devices using 3G (or higher) networks; automatic switching between Wi-Fi and 3G networks according to availability. In all cases, the gateway should be connected to an ASDL router or another device guaranteeing local Wi-Fi and mobile 3G connectivity. Depending on bandwidth limitations, the gateway can serve up to 15 appliances (including door entry monitors, smartphones, tablets and PCs) with 4 simultaneous audio/video streams. It also allows "intercom" communication between all of the 15 devices served. The gateway is equipped with 1 Ethernet port for VIP system riser input, 1 PoE port, 2 PoE ports (can be set to non-PoE) and 1 non-PoE port. It is also equipped with an input for the power supply. Dimensions: 70x90x62 mm (4 DIN modules).



1459

#### CALL LOG SERVER. VIP SYSTEM

Server device for VIP system that allows the recording, storage and playback of calls from external units. Complete with Call-Log administrator software for settings (IP address, date, time, enable audio, video or audio-video recording, recording duration and recording storage time) and recording filters (days of the week, external unit making the call, internal unit receiving the call). Compatible with Windows operating systems. 19 Vdc power supply. Equipped with power supply unit with 100-240 Vac 50/60 Hz input and 19 Vdc output. Dimensions: 190x190x55 mm.



1595

#### 33VDC POWER SUPPLY UNIT FOR IKALL ENTRANCE PANEL

Power supply unit 110-230V input and 33Vdc 500 mA continuous output, and 1.2A inrush current for external unit with IKALL entrance panel. Equipped with internal protection against overcurrent and short circuits. Dimensions: 71.7x90x62 mm (4 DIN modules).



1596A

#### POWER SUPPLY UNIT 33 VDC 60W INPUT 110-240 VAC 316 ENTR. PAN

Power supply unit with 110-230V primary and 33Vdc 1.8A continuous output for 316 range entrance panels. Equipped with internal protection against current overload and short circuits. Dimensions: 71.7x90x62 mm (4 DIN modules).

## ACCESSORIES



1952

### VIDEO CPS VIP

Desk mounted audio-video porter switchboard, with alphanumeric key pad and touch screen. Allows the visitor to be seen and the name or apartment number of the user being called to be displayed. Allows management of calls. Day/Night setting and intercom facility. 12V DC power supply with part. 43082 or directly from VIP network. Dimensions: 193 x 223 x 65 mm



3063D

### MODULE W/8 BUTT.IN 2 ROWS+VIP FOR SING.-PLATE PAN.

Button management module. Works in conjunction with audio/video modules or audio module. Allows management of 8 buttons. Dimensions: 45x55x30 mm.



SK9071

### SIMPLEKEY LIFT INTERFACE

To be connected to the VIP Actuator module part. 1443. 12 Vdc power supply. Allows one or more relay contacts to be activated through an interface for lift systems or other uses. Up to 10 SK9071 interfaces can be connected to each 1443, therefore up to 100 relay contacts. Dimensions: 140 x 95 x 55 mm (8 DIN modules)



SW05SIP

### LICENSE FOR INCREASING ART. 1456G BY 5 USERS

Software License for increasing the VOIP extensions addressed via ViP interface Art. 1456G by 5 units.

SW10SIP

### LICENSE FOR INCREASING ART. 1456G BY 10 USERS

Software License for increasing the VOIP extensions addressed via ViP interface Art. 1456G by 10 units.

SW20SIP

### LICENSE FOR INCREASING ART. 1456G BY 20 USERS

SW license for increasing the VOIP extensions (addressed via ViP interface Art. 1456G) by 20 units.



SW50SIP

### LICENSE FOR INCREASING ART. 1456G BY 50 USERS

SW license for increasing the VOIP extensions (addressed via ViP interface Art. 1456G) by 50 units.

SW100SIP

### LICENSE FOR INCREASING ART. 1456G BY 100 USERS

Software License for increasing the VOIP extensions addressed via ViP interface Art. 1456G by 100 units.

# INDEX - 1 of 3

VIP SYSTEM

1172B	LED BULB FOR EXTERNAL UNITS	52
1218	NAME TAG SHEETS FOR IKALL ENTRANCE PANEL	56 - 60
1219	NAME TAG SHEETS FOR VANDALCOM ENTRANCE PANEL	52
1437	VIP SCAN PROTECTOR	62
1439	SERVER/CLIENT BRIDGE FOR VIP SYSTEM	62
1440	NETWORK SWITCH 4 PORT	62
1441	RISER POWER SUPPLY VIP 120W	62
1441A	VIP SYSTEM 120W RISER POWER SUPPLY UNIT	62
1441B	30W VIP SYSTEM POWER SUPPLY UNIT	62
1443	VIP SYSTEM RELAY ACTUATOR MODULE	62
1445H	VIP SYSTEM REMOTE CAMERA MODULE H264	62
1446H	VIP SYSTEM PAL OR NTSC VIDEO OUTPUT MODULE H264	62
1447	10/100MB ACTIVE REPEATER MODULE VIP	62
1448	SWITCHBOARD SOFTWARE FOR PC FOR VIP SYSTEM	62
1449	RJ45 ETHERNET CABLE, 4-POLE CONNECTION. LENGTH 2M	62
1450	VIP BARCODE READER FOR DEVICES	63
1451A	POE POWER SUPPLY UNIT FOR VIP SYSTEM MONITOR	63
1452	VIP REMOTE CONNECTION INTERFACE	63
1454	PC INTERCOM	63
1454K	LOCAL PC DOOR ENTRY MONITOR SOFTWARE VIP	63
1456	MASTER APARTMENT GATEWAY	63
1456B	MULTI-APARTMENT GATEWAY FOR VIP SYSTEM	63
1456B/M1	1 MASTER LICENSE FOR 1456B, VIP SYSTEM (USB KEY)	63
1456B/M10	10 MASTER LICENSES FOR 1456B, VIP SYSTEM (USB KEY)	63
1456B/M100	100 MASTER LICENSES FOR 1456B, VIP SYSTEM (USB KEY)	63
1456B/M200	200 MASTER LICENSES FOR 1456B, VIP SYSTEM (USB KEY)	63
1456B/M50	50 MASTER LICENSES FOR 1456B, VIP SYSTEM (USB KEY)	63
1456B/ME1	1 MASTER LICENSE FOR 1456B, VIP SYSTEM (E-MAIL)	64
1456B/ME10	10 MASTER LICENSES FOR 1456B, VIP SYSTEM (E-MAIL)	64
1456B/ME100	100 MASTER LICENSES FOR 1456B, VIP SYSTEM (E-MAIL)	64
1456B/ME200	200 MASTER LICENSES FOR 1456B, VIP SYSTEM (E-MAIL)	64
1456B/ME50	50 MASTER LICENSES FOR 1456B, VIP SYSTEM (E-MAIL)	64
1456B/S1	1 SLAVE LICENSE FOR 1456B, VIP SYSTEM (USB-KEY)	63
1456B/S10	10 SLAVE LICENSES FOR 1456B, VIP SYSTEM (USB-KEY)	63
1456B/S100	100 SLAVE LICENSES FOR 1456B, VIP SYSTEM (USB-KEY)	63
1456B/S200	200 SLAVE LICENSES FOR 1456B, VIP SYSTEM (USB-KEY)	63
1456B/S50	50 SLAVE LICENSES FOR 1456B, VIP SYSTEM (USB-KEY)	63
1456B/SE1	1 SLAVE LICENSE FOR 1456B, VIP SYSTEM (E-MAIL)	64
1456B/SE10	10 SLAVE LICENSES FOR 1456B, VIP SYSTEM (E-MAIL)	64
1456B/SE100	100 SLAVE LICENSES FOR 1456B, VIP SYSTEM (E-MAIL)	64
1456B/SE200	200 SLAVE LICENSES FOR 1456B, VIP SYSTEM (E-MAIL)	64





1456B/SE50	50 SLAVE LICENSES FOR 1456B, VIP SYSTEM (E-MAIL)	64
1456B/T1	1 PHONE LICENCE FOR 1456B, VIP SYSTEM (USB KEY)	63
1456B/T10	10 PHONE LICENCES FOR 1456B, VIP SYSTEM (USB KEY)	63
1456B/T100	100 PHONE LICENCES FOR 1456B, VIP SYSTEM (USB KEY)	63
1456B/T200	200 PHONE LICENCES FOR 1456B, VIP SYSTEM (USB KEY)	63
1456B/T50	50 PHONE LICENCES FOR 1456B, VIP SYSTEM (USB KEY)	63
1456B/TE1	1 PHONE LICENCE FOR 1456B, VIP SYSTEM (E-MAIL)	64
1456B/TE10	10 PHONE LICENCES FOR 1456B, VIP SYSTEM (E-MAIL)	64
1456B/TE100	100 PHONE LICENCES FOR 1456B, VIP SYSTEM (E-MAIL)	64
1456B/TE200	200 PHONE LICENCES FOR 1456B, VIP SYSTEM (E-MAIL)	64
1456B/TE50	50 PHONE LICENCES FOR 1456B, VIP SYSTEM (E-MAIL)	64
1456G	THIRD PARTY HOME AUTOMATION INTERFACE	64
1456S	APARTMENT SLAVE GATEWAY FOR VIP SYSTEM	64
1459	CALL LOG SERVER. VIP SYSTEM	64
1595	33VDC POWER SUPPLY UNIT FOR IKALL ENTRANCE PANEL	47 - 52 - 56 - 60 - 64
1596A	POWER SUPPLY UNIT 33 VDC 60W INPUT 110-240 VAC 316 ENTR. PAN	46 - 64
1682	IKALL VIP AUDIO ONLY SPEAKER	52 - 55 - 60
1682HVC	IKALL SERIES AUDIO MOD. FOR REM.COL.CAM. VIP. H264	52 - 55 - 60
1952	VIDEO CPS VIP	65
2633	ELEGANCE DOOR-ENTRY PHONE, VIP SYSTEM. STYLE SERIES	44
3063D	MODULE W/8 BUTT.IN 2 ROWS+VIP FOR SING.-PLATE PAN.	65
3064S	4-BUTTON MODULE, VANDALCOM SERIES	51
3070S	DIGITAL CALL MODULE, VANDALCOM SERIES	51
3072S	DIGITAL DIRECTORY MODULE, VANDALCOM SERIES	51
3110/1	1 MODULE BACK BOX	53 - 56
3110/2	2 MODULE BACK BOX	53 - 56
3110/3	3 MODULE BACK BOX	53 - 56
3110/4	4 MODULE BACK BOX	53 - 56
31121	RAIN SHIELD FOR 1 MODULE ENTRANCE PANEL	53 - 57
31122	RAIN SHIELD FOR 2 MODULE ENTRANCE PANEL	53 - 57
31123	RAIN SHIELD FOR 3 MODULE ENTRANCE PANEL	53 - 57
31124L	IKALL RAIN SHIELD FOR 4 VERTICAL MODULES	53 - 57
31141	IKALL CORNICE FOR 1 MODULE PANEL	53 - 57
31142	IKALL CORNICE FOR 2 MODULE PANEL	53 - 57
31143	IKALL CORNICE FOR 3 MODULE PANEL	53 - 57
31144L	IKALL CORNICE FOR 4 VERTICAL MODULES	53 - 57
31161	IKALL 1 MODULE HOUSING WITH RAINSHIELD	53 - 57
31162	IKALL HOUSING WITH RAINSHIELD 2 MODULE	53 - 57
31163	IKALL HOUSING WITH RAINSHIELD 3 MODULE	53 - 57
31164L	IKALL HOUSING WITH RAINSHIELD 4 MODULE	53 - 57
3159/1	VANDALCOM SERIES STAINLESS STEEL SURFACE-MOUNTED HOUSING	50

# INDEX - 2 of 3

VIP SYSTEM

3159/2	VANDALCOM SERIES STAINLESS STEEL SURFACE-MOUNTED HOUSING	50
3159/3	VANDALCOM SERIES STAINLESS STEEL SURFACE-MOUNTED HOUSING	50
3160/1	FLUSH-MOUNTED BOX FOR VANDALCOM ENTRANCE PANEL	50
3160/2	FLUSH-MOUNTED BOX FOR VANDALCOM ENTRANCE PANEL	50
3160/3	FLUSH-MOUNTED BOX FOR VANDALCOM ENTRANCE PANEL	50
3161/1	VANDALCOM SERIES FRAME. DARK GREY COLOUR	50
3161/1A	VANDALCOM SERIES FRAME. STEEL GREY COLOUR	50
3161/2	VANDALCOM SERIES FRAME. DARK GREY COLOUR	50
3161/2A	VANDALCOM SERIES FRAME. STEEL GREY COLOUR	50
3161/3	VANDALCOM SERIES FRAME. DARK GREY COLOUR	50
3161/3A	VANDALCOM SERIES FRAME. STEEL GREY COLOUR	50
3176S	STEEL BLANK MODULE, VANDALCOM SERIES	51
3179S	MODULE FOR SIMPLEKEY READER, VANDALCOM SERIES	51
3186S	INDICATION/NAMEPLATE MODULE, VANDALCOM SERIES	51
3188S	VANDALCOM ELECTRONIC KEY FOR PW AND IKALL UNITS	51
3201HXV	1 BUTTON FLUSH 316 ANALOG A/V PANEL VIP H264	48
3201XA	1 BUTTON FLUSH 316 ANALOG AUDIO PANEL VIP	47
3202HXV	2 BUTTONS FLUSH 316 ANALOG A/V PANEL VIP H264	48
3202XA	2 BUTTONS FLUSH 316 ANALOG AUDIO PANEL VIP	47
3203HXV	3 BUTTONS FLUSH 316 ANALOG A/V PANEL VIP H264	48
3203XA	3 BUTTONS FLUSH 316 ANALOG AUDIO PANEL VIP	47
3204HXV	4 BUTTONS FLUSH 316 ANALOG A/V PANEL VIP H264	48
3204XA	4 BUTTONS FLUSH 316 ANALOG AUDIO PANEL VIP	47
3205HXV	5 BUTTONS FLUSH 316 ANALOG A/V PANEL VIP H264	48
3205XA	5 BUTTONS FLUSH 316 ANALOG AUDIO PANEL VIP	47
3206HXV	6 BUTTONS FLUSH 316 ANALOG A/V PANEL VIP H264	48
3206XA	6 BUTTONS FLUSH 316 ANALOG AUDIO PANEL VIP	47
3207HXV	7 BUTTONS FLUSH 316 ANALOG A/V PANEL VIP H264	48
3207XA	7 BUTTONS FLUSH 316 ANALOG AUDIO PANEL VIP	47
3208HXV	8 BUTTONS FLUSH 316 ANALOG A/V PANEL VIP H264	48
3208XA	8 BUTTONS FLUSH 316 ANALOG AUDIO PANEL VIP	47
3209HXV	9 BUTTONS FLUSH 316 ANALOG A/V PANEL VIP H264	48
3209XA	9 BUTTONS FLUSH 316 ANALOG AUDIO PANEL VIP	47
3210HXV	10 BUTTONS FLUSH 316 ANALOG A/V PANEL VIP H264	48
3210XA	10 BUTTONS FLUSH 316 ANALOG AUDIO PANEL VIP	47
3211HXV	11 BUTTONS FLUSH 316 ANALOG A/V PANEL VIP H264	48
3211XA	11 BUTTONS FLUSH 316 ANALOG AUDIO PANEL VIP	47
3212HXV	12 BUTTONS FLUSH 316 ANALOG A/V PANEL VIP H264	48
3212XA	12 BUTTONS FLUSH 316 ANALOG AUDIO PANEL VIP	47
3262S/0	0-BUTTON MODULE FOR AUDIO UNITS	51
3262S/1	1-BUTTON MODULE FOR AUDIO UNITS	51
3262S/2	2-BUTTON MODULE FOR AUDIO UNITS	51



3268S/0	0-BUTTON MODULE FOR A/V UNITS	51
3268S/1	1-BUTTON MODULE FOR A/V UNITS	51
3268S/2	2-BUTTON MODULE FOR A/V UNITS	51
3311/1A	MODULE-HOLDER FRAME COMPLETE WITH FINISHING CORNICE	53 - 56
3311/1AL	1 MODULE SURROUND WITH ANODISED ALUMINIUM FRAME	56
3311/1S	IKALL SERIES 1-MODULE HOLDER FRAME W/ SILVER FINISHING FRAME	53 - 56
3311/1W	IKALL SERIES 1-MODULE HOLDER FRAME W/ WHITE FINISHING FRAME	53 - 56
3311/2A	MODULE-HOLDER FRAME COMPLETE WITH FINISHING CORNICE	53 - 56
3311/2AL	2 MODULE SURROUND WITH ANODISED ALUMINIUM FRAME	56
3311/2S	IKALL SERIES 2-MODULE HOLDER FRAME W/ SILVER FINISHING FRAME	53 - 56
3311/2W	IKALL SERIES 2-MODULE HOLDER FRAME W/ WHITE FINISHING FRAME	53 - 56
3311/3A	MODULE-HOLDER FRAME COMPLETE WITH FINISHING CORNICE	53 - 56
3311/3AL	3 MODULE SURROUND WITH ANODISED ALUMINIUM FRAME	56
3311/3S	IKALL SERIES 3-MODULE HOLDER FRAME W/ SILVER FINISHING FRAME	53 - 56
3311/3W	IKALL SERIES 3-MODULE HOLDER FRAME W/ WHITE FINISHING FRAME	53 - 56
3311/4A	MODULE-HOLDER FRAME COMPLETE WITH FINISHING CORNICE	53 - 56
3311/4AL	4 MODULE SURROUND WITH ANODISED ALUMINIUM FRAME	56
3311/4S	IKALL SERIES 4-MODULE HOLDER FRAME W/ SILVER FINISHING FRAME	53 - 56
3311/4W	IKALL SERIES 4-MODULE HOLDER FRAME W/ WHITE FINISHING FRAME	53 - 56
3334	PLAIN MODULE WITH BLACK FACEPLATE	59
3334M	IKALL METAL BLANK MODULE	55
3336	LIT MODULE. IKALL SERIES. SB SYSTEM	59
3336M	IKALL METAL INDICATOR MODULE	55
3339M	IKALL METAL NAME PLATE	55
33400	ZERO-BUTTON AUDIO MODULE WITH BLACK FACEPLATE	57
33400M	IKALL METAL AUDIO MODULE - 0 BUTTONS	54
33401	IKALL AUDIO MODULE - 1 BUTTON	58
33401A	IKALL SERIES 1-BUTTON MODULE FOR AUDIO UNIT - METAL	58
33401M	IKALL METAL AUDIO MODULE - 1 BUTTON	54
33402	IKALL AUDIO MODULE - 2 BUTTONS	58
33402A	IKALL METAL AUDIO MODULE - 2 BUTTONS	58
33402M	IKALL METAL AUDIO MODULE - 2 BUTTONS	54
33410	IKALL VIDEO MODULE - 0 BUTTONS	58
33410M	IKALL METAL VIDEO MODULE - 0 BUTTONS	54
33411	IKALL VIDEO MODULE - 1 BUTTON	58
33411A	IKALL SERIES 1-BUTTON MODULE FOR AUDIO/VIDEO UNIT - METAL	58
33411M	IKALL METAL VIDEO MODULE - 1 BUTTON	54
33412	IKALL VIDEO MODULE - 2 BUTTONS	58
33412A	IKALL SERIES 2-BUTTON MODULE FOR AUDIO/VIDEO UNIT - METAL	59
33412M	IKALL METAL VIDEO MODULE - 2 BUTTONS	54
33433	IKALL SIMPLEBUS 3 BUTTON MODULE	59
33433M	IKALL METAL SB2 3 BUTTON MODULE	54



# INDEX - 3 of 3

VIP SYSTEM

33434	IKALL SIMPLEBUS 4 BUTTON MODULE	59
33434M	IKALL METAL SB2 4 BUTTON MODULE	55
33436	IKALL SIMPLEBUS 6 BUTTON MODULE	59
33436M	IKALL METAL SB2 6 BUTTON MODULE	55
3348	IKALL CODED ACCESS MODULE	59
3348M	IKALL METAL CODED ACCESS MODULE	55
3349	IKALL SIMPLEKEY CUT-OUT	59
3349M	IKALL METAL SIMPLEKEY CUT-OUT	55
3360B	2-WIRE AND VIP CALL MODULE. IKALL SERIES	60
3360BM	2-WIRE AND VIP CALL MODULE. IKALL METAL	55
3452	DIGITAL CAP SENS STAINLESS STEEL A/V ENTRANCE PANEL – VIP	47
3454H	VIP 316 TOUCH A/V ENTRANCE PANEL. H264	46
3458	ACCESS CONTROL ACCESSORY MODULE FOR EXTERNAL UNITS, 316	48
3459	RAINSIELD WITH LEDS FOR 316 SENSE ST. STEEL ENT. PANEL	47
3460/12	FLUSH-MOUNTED BOX FOR 10-11-12-BUTTON ENT.PANELS. 316 SERIES	48
3460/2	FLUSH-MOUNTED BOX FOR 1- AND 2-BUTTON ENT.PANELS. 316 SERIES	48
3460/4	FLUSH-MOUNTED BOX FOR 3- AND 4-BUTTON ENT.PANELS. 316 SERIES	48
3460/6	FLUSH-MT.BOX FOR TOUCH-SENSE & 5-6 BUTT.ENT.PAN. 316 SERIES	48
3460/9	FLUSH-MOUNTED BOX FOR 7-8-9-BUTTON ENT. PANELS. 316 SERIES	48
3460EA	AUDIO ENTRANCE PANEL FOR EMERGENCY CALLS. VIP SYSTEM	61
3460HA	AUDIO HELP POINT PUSHBUTTON ENTRANCE PANEL. VIP SYSTEM	61
3460HEV	VIDEO ENT. PANEL FOR EMERGENCY CALLS. VIP SYSTEM. H264	61
3460HHV	VIDEO HELP POINT ENTRANCE PANEL. VIP SYSTEM H264	61
3461	WALL HOUSING FOR EMERGENCY AND HELP POINT PANELS	61
3462/2	WALL-MOUNTED HOUSING SERIES 316 1 & 2 BUT. PANEL	48
3462/4	WALL-MOUNTED HOUSING SERIES 316 3 & 4 BUT. PANEL	48
3462/6	WALL HOUSING FOR TOUCH-SENSE & 5-6 BUTT.ENT.PAN. 316 SERIES	48
3472	SENSE MODULE VIP SYSTEM ARCHITECTUS-PRO	49
3474	TOUCH MODULE VIP SYSTEM ARCHITECTUS-PRO	49
3476	MODULE A/V VIP SYSTEM ARCHITECTUS-PRO	49
3478	MODULE AUDIO VIP SYSTEM ARCHITECTUS-PRO	49
3479	MODULE FOR SIMPLEKEY READER ARCHITECTUS-PRO	49
3481	MODULE 1 BUTTON SB/VIP BLANK NAMEPLATE ARCHITECTUS-PRO	49
3482	MODULE 2 BUTTON SB/VIP BLANK NAMEPLATE ARCHITECTUS-PRO	49
3483	MODULE 3 BUTTON SB/VIP BLANK NAMEPLATE ARCHITECTUS-PRO	50
3484	MODULE 4 BUTTON SB/VIP BLANK NAMEPLATE ARCHITECTUS-PRO	50
3489	CUSTOMISED NAMEPLATE ARCHITECTUS-PRO	50
3639/1	PILLAR FOR ENTRANCE PANEL, HEIGHT 170 CM	54 - 57
3639/2	PILLAR FOR ENTRANCE PANEL, HEIGHT 170 CM	54 - 57
3639/3	PILLAR FOR ENTRANCE PANEL, HEIGHT 170 CM	54 - 57
3640/1	PILLAR FOR ENTRANCE PANEL, HEIGHT 117 CM	54 - 57
3640/2	PILLAR FOR ENTRANCE PANEL, HEIGHT 117 CM	54 - 57



3640/3	PILLAR FOR ENTRANCE PANEL, HEIGHT 117 CM	54 - 57
3649/1	1 MODULE 45° ANGLED ENTRANCE PANEL HOUSING	54 - 57
3649/2	2 MODULE 45° ANGLED ENTRANCE PANEL HOUSING	54 - 57
3649/3	3 MODULE 45° ANGLED ENTRANCE PANEL HOUSING	54 - 57
4682HC	COL.AUD/VID UNIT FOR VIP SYST., IKALL SERIES.H264	52 - 56 - 60
4682HCW	D&N WIDE COL.A/V UNIT. VIP SYS. IKALL SERIES. H264	52 - 56 - 60
4682HKC	COLOUR A/V UNIT FOR VIP SYSTEM, IKALL SERIES. H264	42
4894E	EASYCALL INTERNAL 1 BUTTON ENTRANCE PANEL FOR VIP SYSTEM	61
4894HIM	EXTERNAL UNIT FOR VIP KIT - IKALL METAL H264	42
6117	PLANUX, SMART, ICONA FLUSH BACKBOX	45
6118	PLANUX CLIPS FOR DRY LINED WALLS	45
6203B	EASYCOM VIP UNIT - BLACK	43
6203W	EASYCOM VIP UNIT - WHITE	43
6602W	ICONA SERIES HANDS-FREE COLOUR MONITOR. VIP SYSTEM. H264	45
6612	DESK BASE FOR ICONA MONITOR	45
6620	WALL BRACKET FOR ICONA MONITOR	45
6802W	MAXI SERIES 7" MONITOR. VIP SYSTEM	44
6812	DESK BASE FOR MAXI MONITOR	44
6817	FLUSH-MOUNTED BOX FOR MAXI MONITOR	44
6820	SBC & VIP MAXI MONITOR WALL SUPPORT	44
8501HIM	SING.-FAMILY KIT W/ IKALL METAL & PC INTERCOM VIP H264 SYST.	42
8504H	SING.-FMLY KIT W/VANDALCOM & PC INTERCOM VIP SYST. KIT H264	42
8513HIM	SINGLE-FAMILY KIT W/IKALL METAL AND MASTER GATEWAY. VIP H264	41
8521	IKALL METAL AND ICONA KIT.VIP H264 SYSTEM	41
8522	2-FAMILY IKALL AND VIP ICONA H264 KIT	41
8531	IKALL METAL AND ICONA KIT, GATEWAY SLAVE. H264	41
SK9001I	SIMPLEKEY ADVANCED READER IKALL	52
SK9071	SIMPLEKEY LIFT INTERFACE	65
SW05SIP	LICENSE FOR INCREASING ART. 1456G BY 5 USERS	65
SW100SIP	LICENSE FOR INCREASING ART. 1456G BY 100 USERS	65
SW10SIP	LICENSE FOR INCREASING ART. 1456G BY 10 USERS	65
SW20SIP	LICENSE FOR INCREASING ART. 1456G BY 20 USERS	65
SW50SIP	LICENSE FOR INCREASING ART. 1456G BY 50 USERS	65



[ IT ] **Comelit Group Spa**  
Via Don Arrigoni 5  
24020 Rovetta S. Lorenzo  
Bergamo Italy  
Tel. +39 (0) 346 750011  
Fax +39 (0) 346 71436  
www.comelitgroup.com  
info@comelit.it

[ AU ] **Comelit Australia Pty Ltd**  
Unit 6/11 Sabre Drive  
Port Melbourne  
Victoria 3207  
Ph. 1300 889000  
enquiries@comelitgroup.com.au

[ BE ] **Comelit Group Belgium**  
Kleinewinkellan 24  
1853 Grimbergen  
Belgium  
Tel. +32 2 411 50 99  
Fax. +32 2 411 50 97  
www.comelit.be  
info@comelit.be

[ CO ] **Comelit Colombia**  
Carrera 76#73-44, 2° piso Bogotá,  
Colombia  
Tel.: (57-1) 4929358/79686  
james.quimbaya@comelit.it  
www.comelit.com.co

[ DE ] **Comelit Group S.p.A. Deutschland**  
Konrad-Zuse-Ring 12c  
41179 Mönchengladbach  
Deutschland  
tel. 02161/54959-0  
fax: 02161/54959-10  
info@comelit.de

[ ES ] **Comelit Group Spa  
Sucursal en Espana**  
Calle Pintor Roig i Soler, 28  
08916 - Badalona (Barcelona)  
Tel. +34 932 430 376  
Fax +34 934 084 683  
www.comelit.es  
info@comelit.es

[ FR ] **Comelit Immotec**  
18, rue Séjourné  
94000 CRETEIL CEDEX  
Tél. +33 (0) 1 43 53 97 97  
Fax +33 (0) 1 43 53 97 87  
www.comelit.fr  
contact@comelit-immotec.fr

[ GR ] **Comelit Hellas  
Telergo Security Ltd**  
Roumelis, 59  
16451 Argiroupoli - Athens Greece  
Tel. +30 210 99 68 605-6  
Fax +30 210 99 45 560  
www.comelit.gr  
telergo@otenet.gr

[ IE ] **Comelit Ireland**  
Ground Floor  
14 Herbert Street - Dublin 2  
Tel. +353 (0) 1 619 0204  
Fax +353 (0) 1 619 0298  
www.comelit.ie  
info@comelit.ie

[ NL ] **Comelit Nederland BV**  
Buitendijks 1-3356 LX Papendrecht  
Tel. +31 786511201  
Fax +31 786170955  
www.comelit.nl  
info@comelit.nl

[ SG ] **Comelit South East Asia Pte Ltd**  
Oxley Bizhub1 Blk 69,  
Ubi Road 1, #05-27  
408731 Singapore  
Tel. +6567024780  
www.comelit.sg  
office@comelit.sg

[ AE ] **Comelit Middle East**  
Office 1-154, Techno Hub  
Dubai Silicon Oasis  
Free zone - Dubai, UAE  
www.comelit.ae  
info@comelit.ae

[ GB ] **Comelit Group UK Ltd**  
Unit 4 Mallow Park Watchmead  
Welwyn Garden City Herts  
AL7 1GX  
Tel: +44 (0)1707377203  
Fax: +44 (0)1707377204  
www.comelitgroup.co.uk  
info@comelitgroup.co.uk

[ US ] **Comelit Usa**  
2021 S. Myrtle Avenue  
Monrovia, CA 91016  
Tel. +1 626 930 0388  
Fax +1 626 930 0488  
www.comelitusa.com  
sales@comelitusa.com

[ RU ] **Comelit Group Russia**  
Moscow,  
Krasnogvardeyskiy bulvar, 7A  
tel: +7(495)789-49-33  
www.comelit.ru  
mail: tsn@comelit.ru  
mail: info@comelit.ru

[ HK ] **Comelit Hong Kong**  
Representative Office  
Rm 601, 6/F, Tung Hip  
Commercial Building,  
248 Dex Voeux Road Central,  
Sheung Wan, Hong Kong  
Office direct line:  
+852 3582 1632  
www.comelit.hk  
info@comelit.hk

No part of this document may be reproduced without prior  
written authorisation from Comelit Group spa. The brands  
and trade names cited in this publication are the property  
of their respective owners.

## Comelit Group Spa

Via Don Arrigoni 5  
24020 Rovetta S. Lorenzo  
Bergamo [Italy]  
Tel. +39 (0) 346 750011  
Fax +39 (0) 34671436  
www.comelitgroup.com

